

Circadian Rhythms and Behavior

Jerry A. Hogan
Department of Psychology
University of Toronto

This research was supported by a grant from
the Natural Sciences and Engineering
Research Council of Canada

Outline

Behavior systems and causal factors

Dustbathing as a model system

Rhythms as a causal factor

 Rhythms and feeding

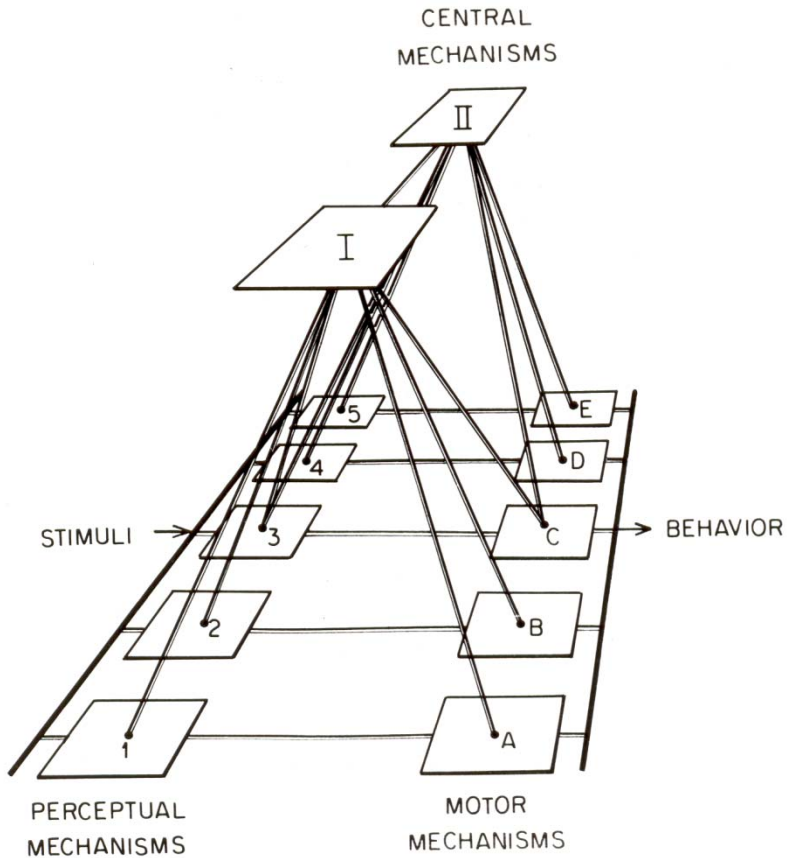
 Rhythms and dustbathing

 Rhythms and sleep

Development of sleep

Discussion: Implications for humans

Behavior System Model



Structure – components

Motivation – activation of components

Development – changes in structure

Interaction of components

Causal factors for behavior

Factors specific to the behavior

Internal (endogenous)

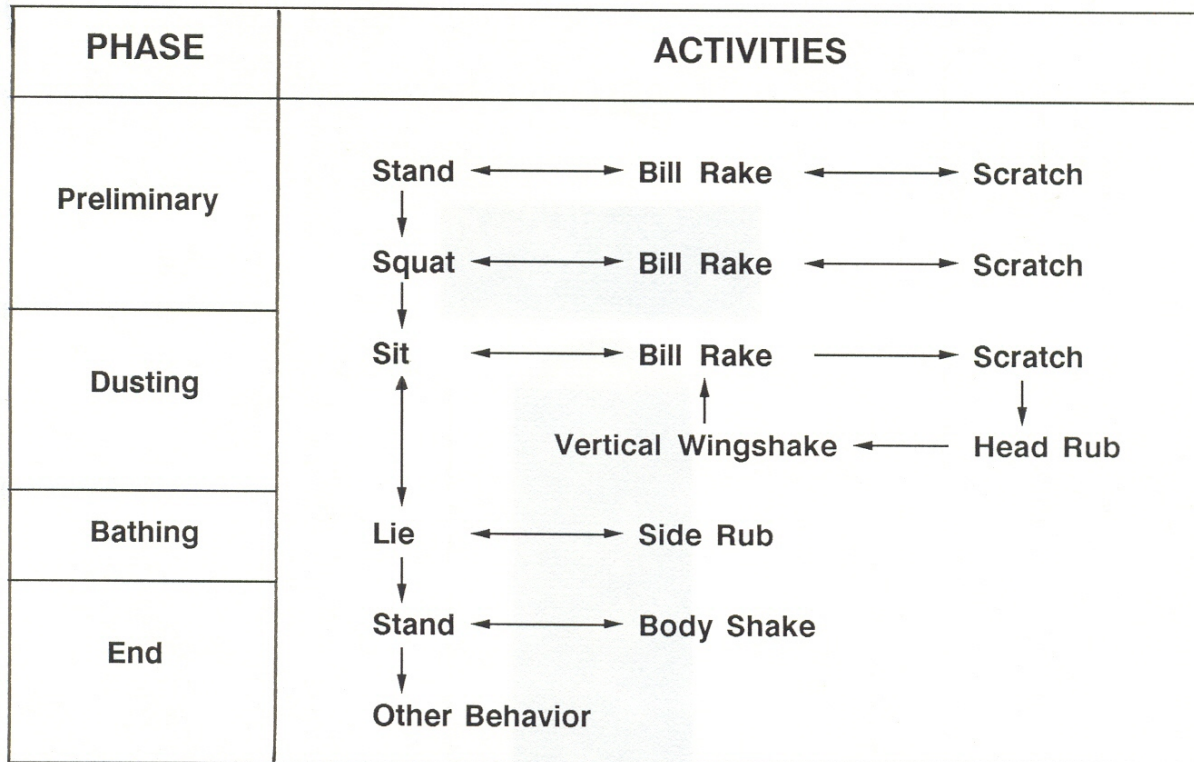
External

General causal factors

Circadian clocks

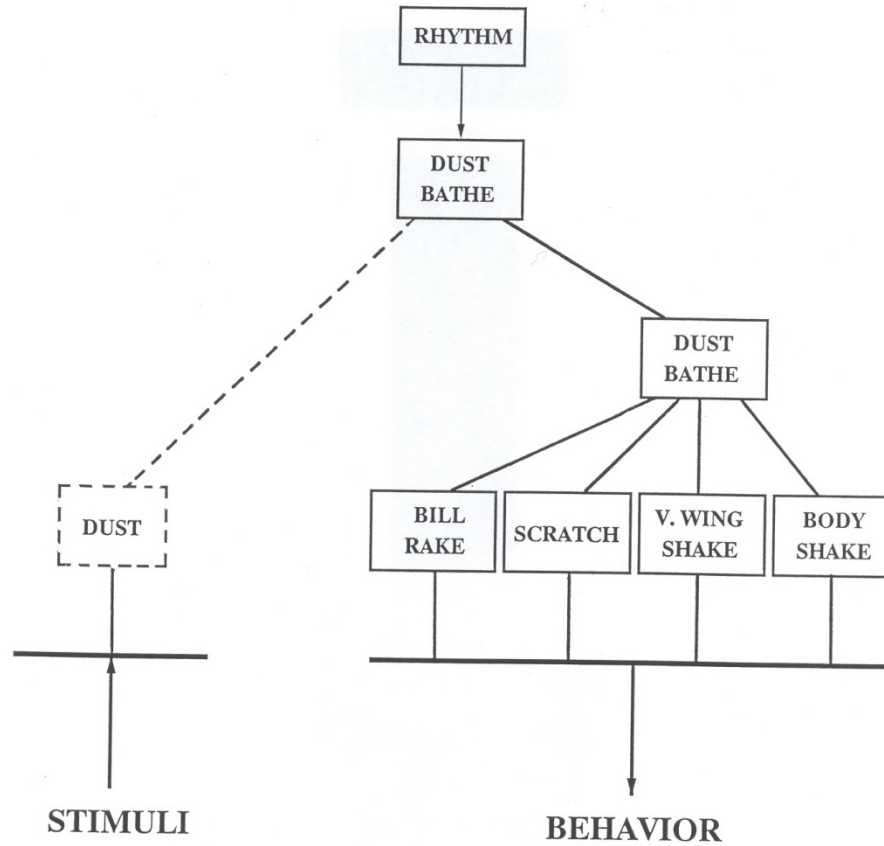
Interactions with other behaviors

Dustbathing Flow Diagram



After van Liere, 1986

Dustbathing Behavior System



Causal Factors for Dustbathing

Specific causal factors

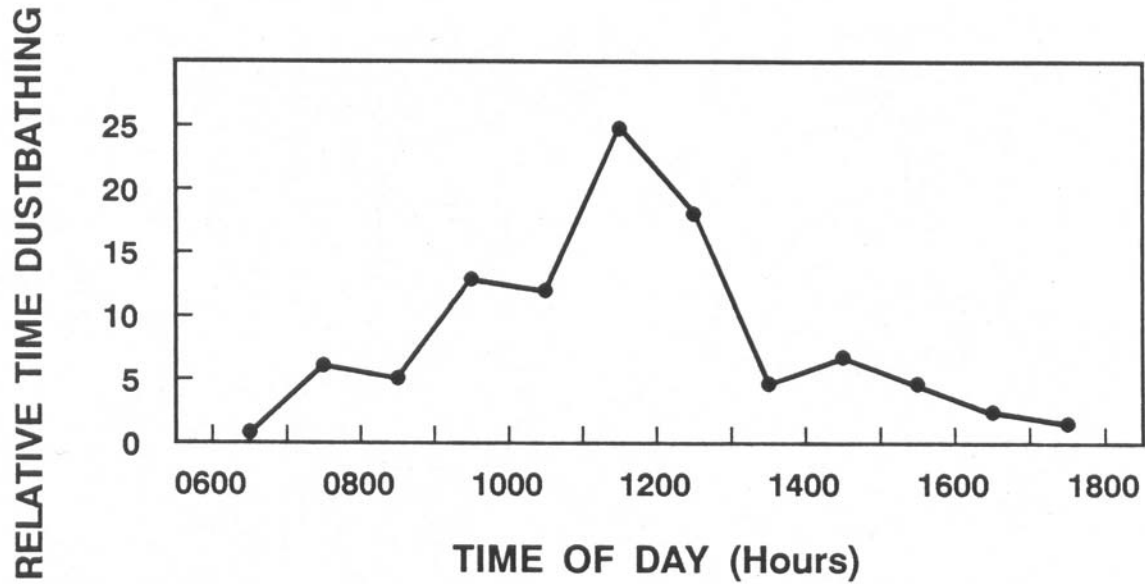
Internal: Dust deprivation

External: Dust, Light/Heat

General causal factor

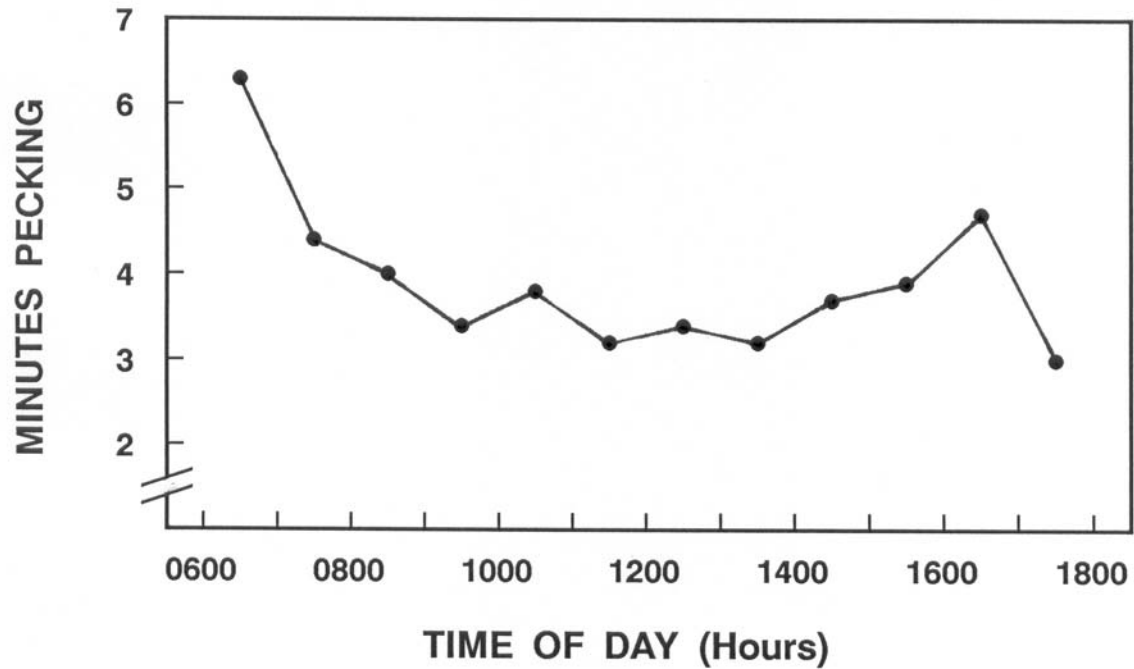
Circadian system

Dustbathing during the day



Data from Hogan & van Boxel, 1993

Feeding during the day



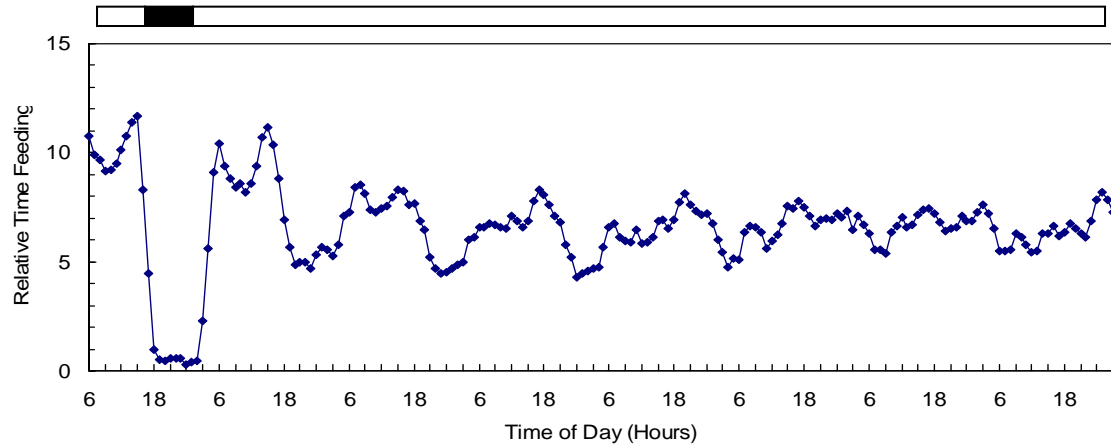
Experiments on circadian control

Expose animals to constant conditions and look for a free-running rhythm

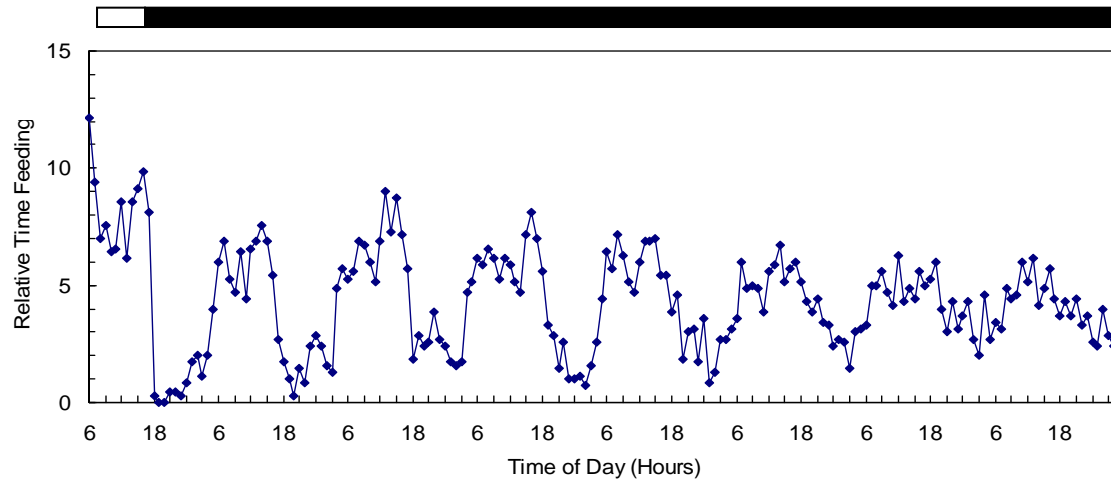
Chicks raised for first 2 weeks of life under 12:12 L:D conditions and then exposed to constant conditions (light/dark/dim light) for 7-8 days. On the final LD day and subsequent days under constant conditions, behavior was recorded and analyzed.

Feeding – Free running

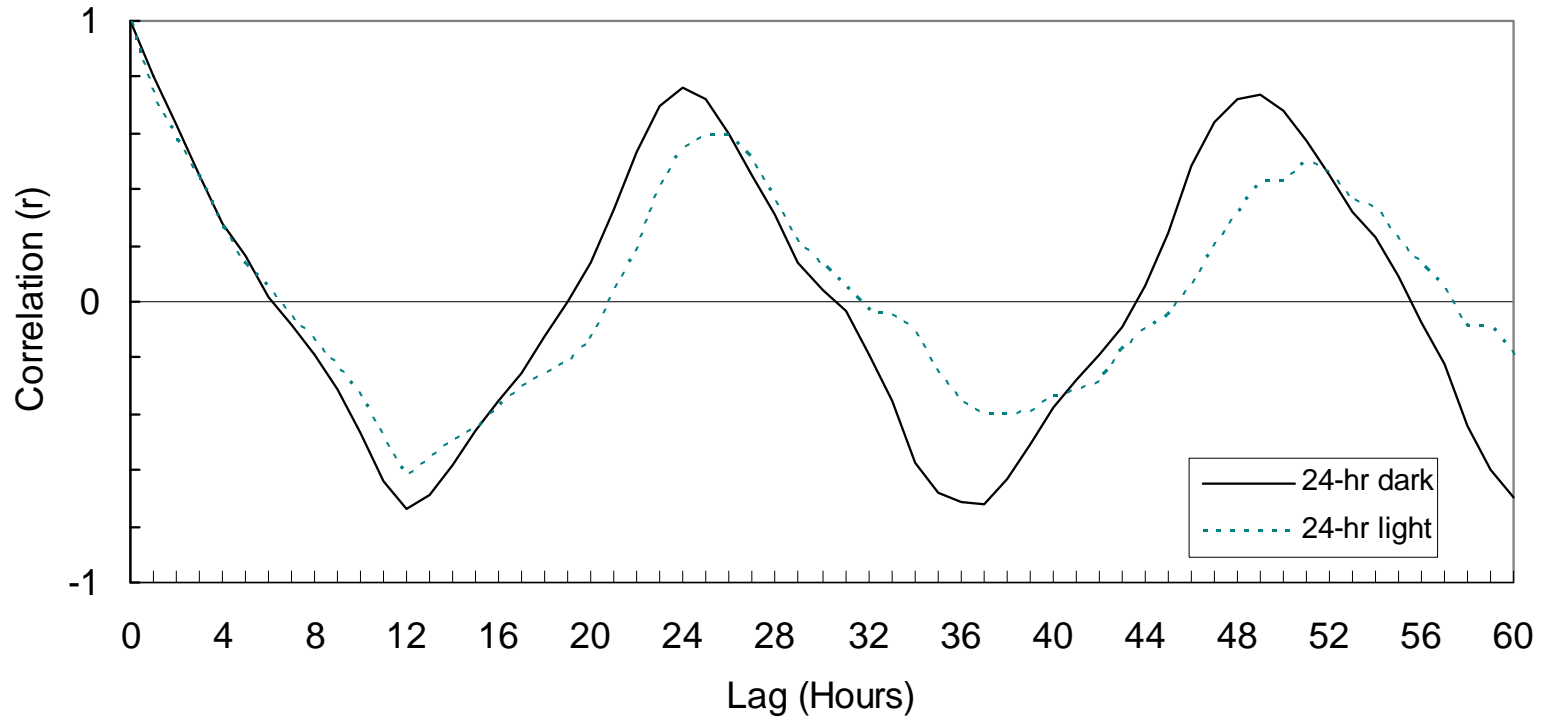
24-hr Light
(3-hr running average)



24-hr Dark
(3-hr running average)



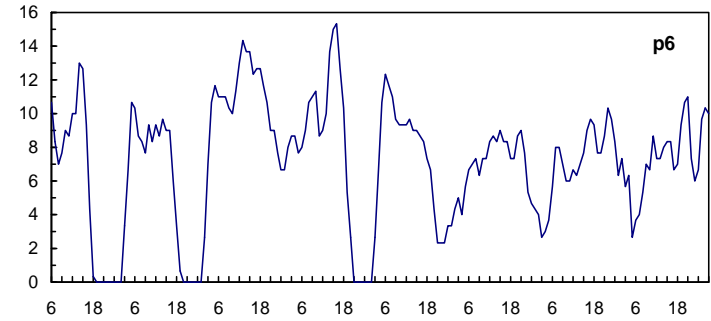
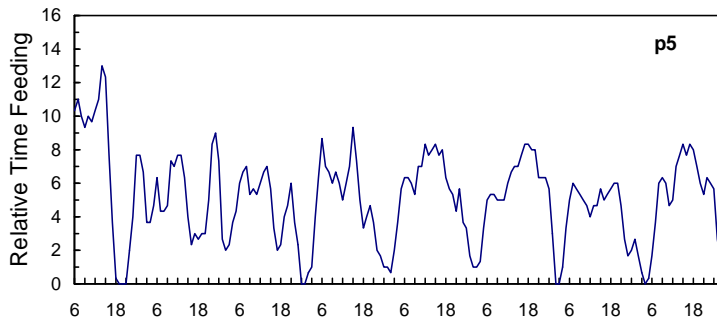
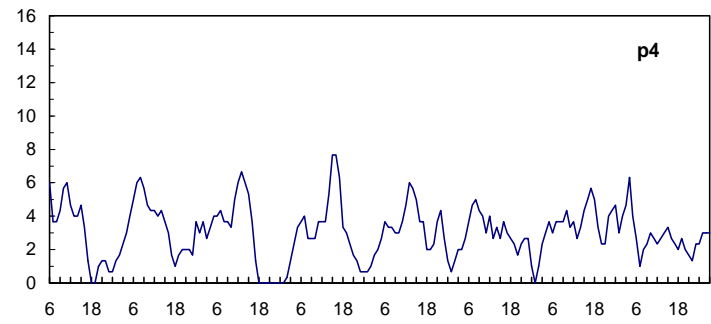
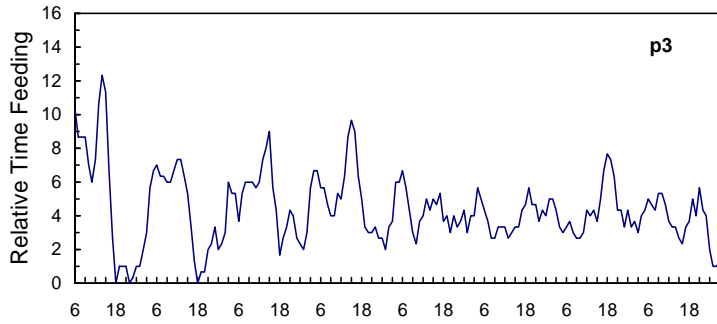
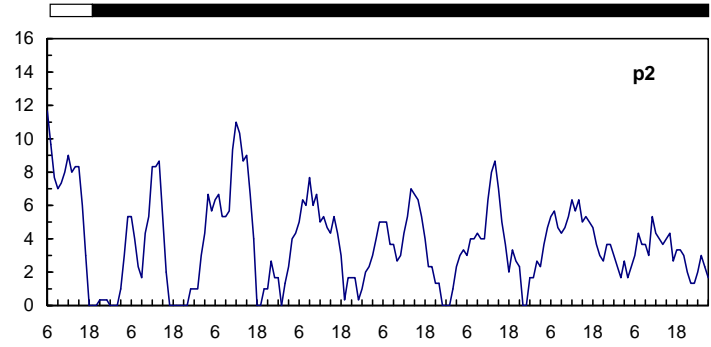
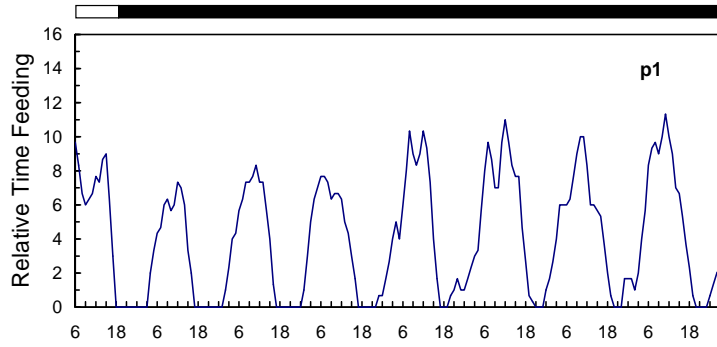
Autocorrelations - Feeding



$\tau \approx 24.5$ hr (Dark)

$\tau \approx 25.5$ hr (Light)

Individual Feeding DD (3-hr running average)

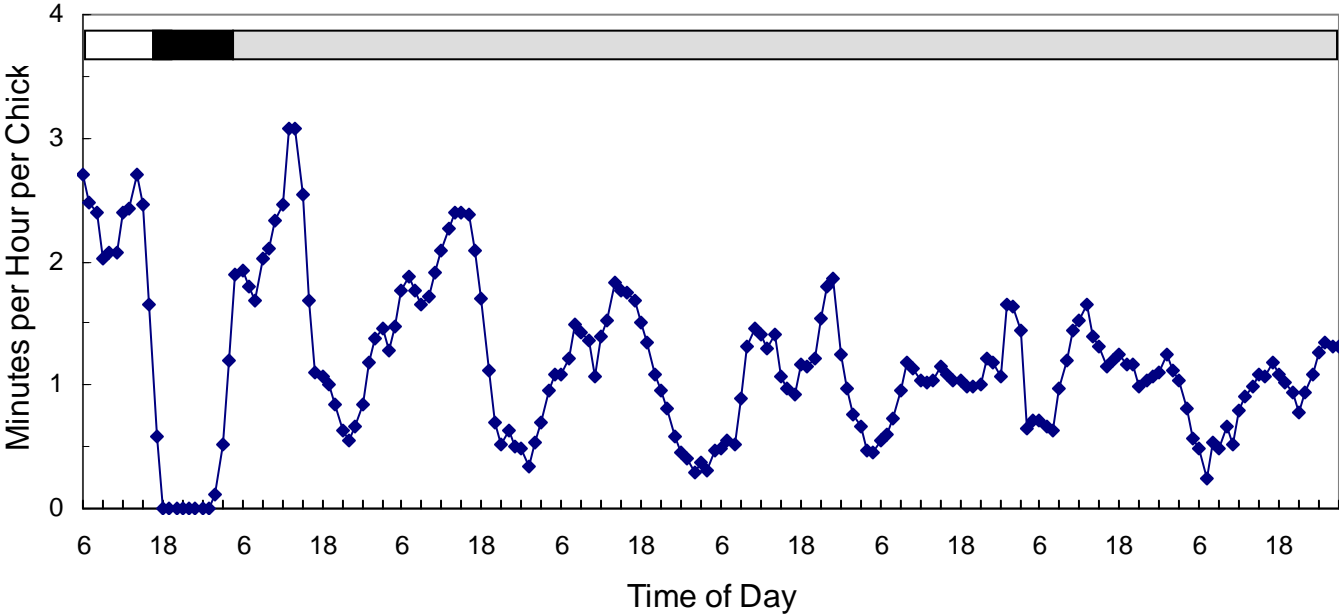


Time of Day (Hours)

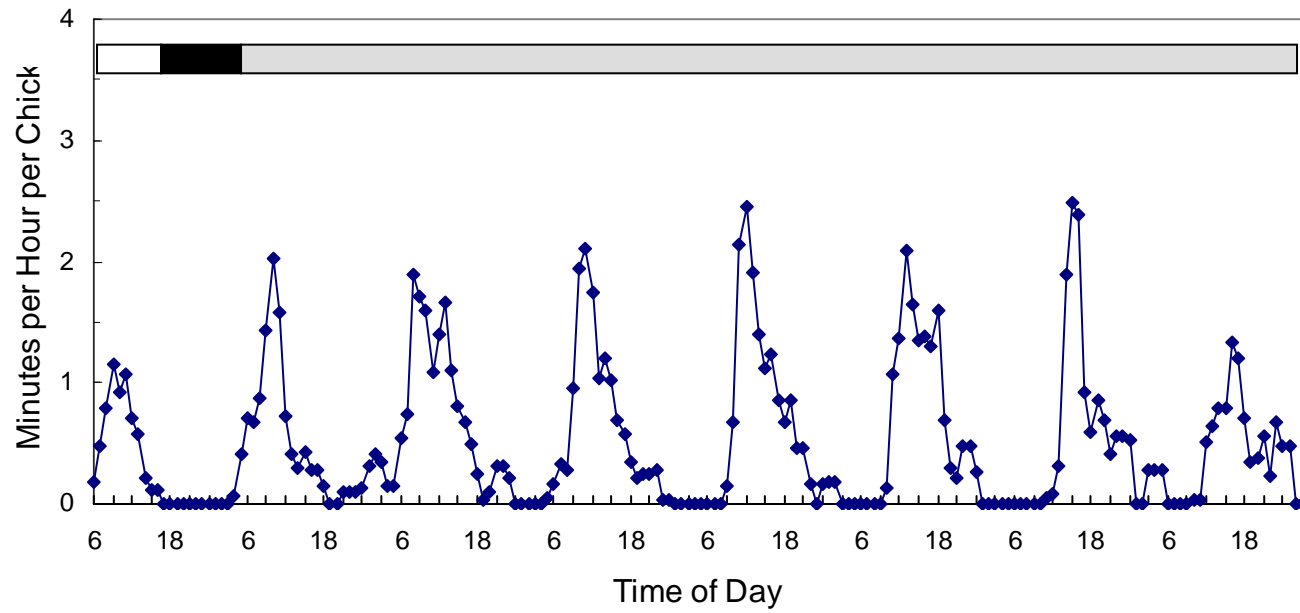
Dim Light Experiment: Feeding and Dustbathing

Feeding registered automatically, but dustbathing observed on video tapes. Dim light was a standard 25-W light bulb that provided about 1.5 lux in the cages.

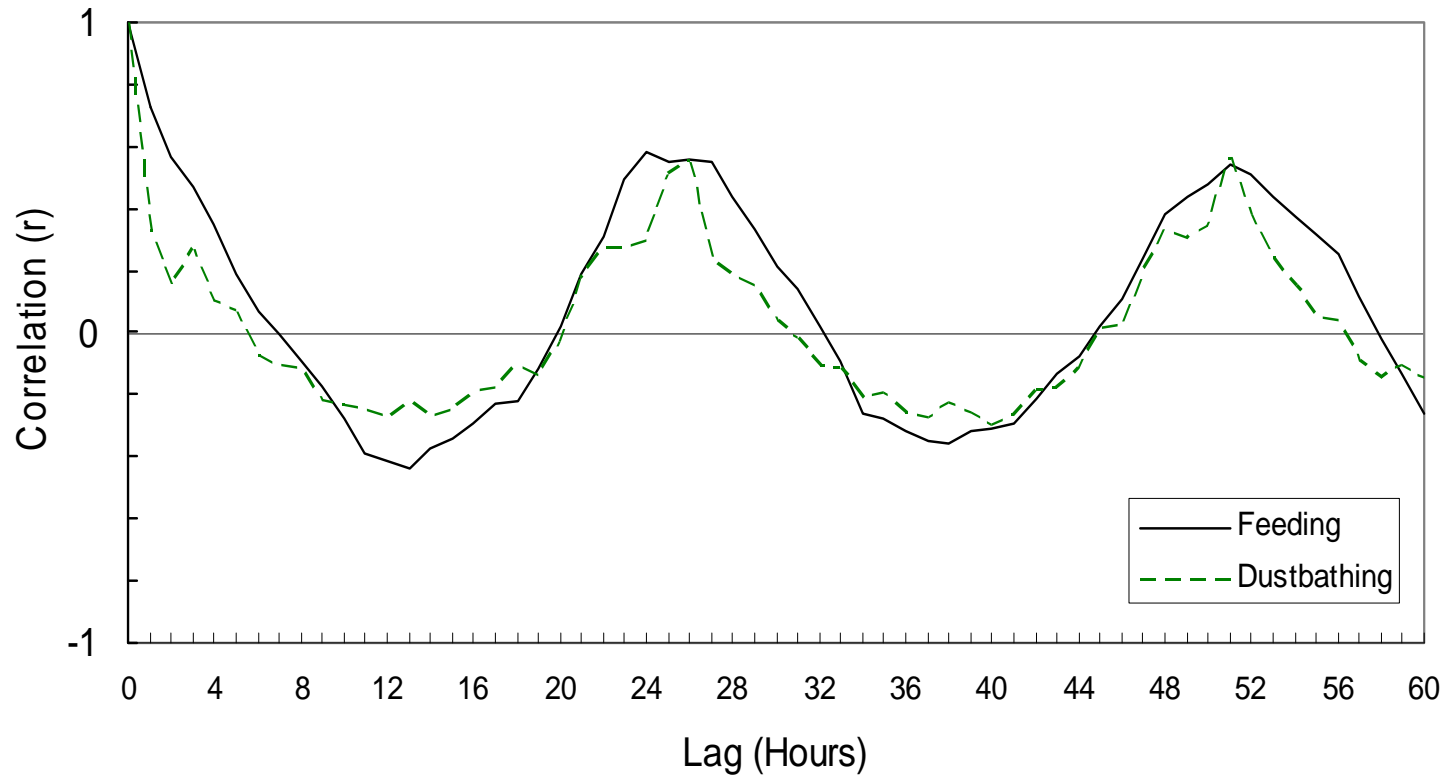
Dim Light Feeding (3-hr running average)



Dim Light Dustbathing (3-hr running average)

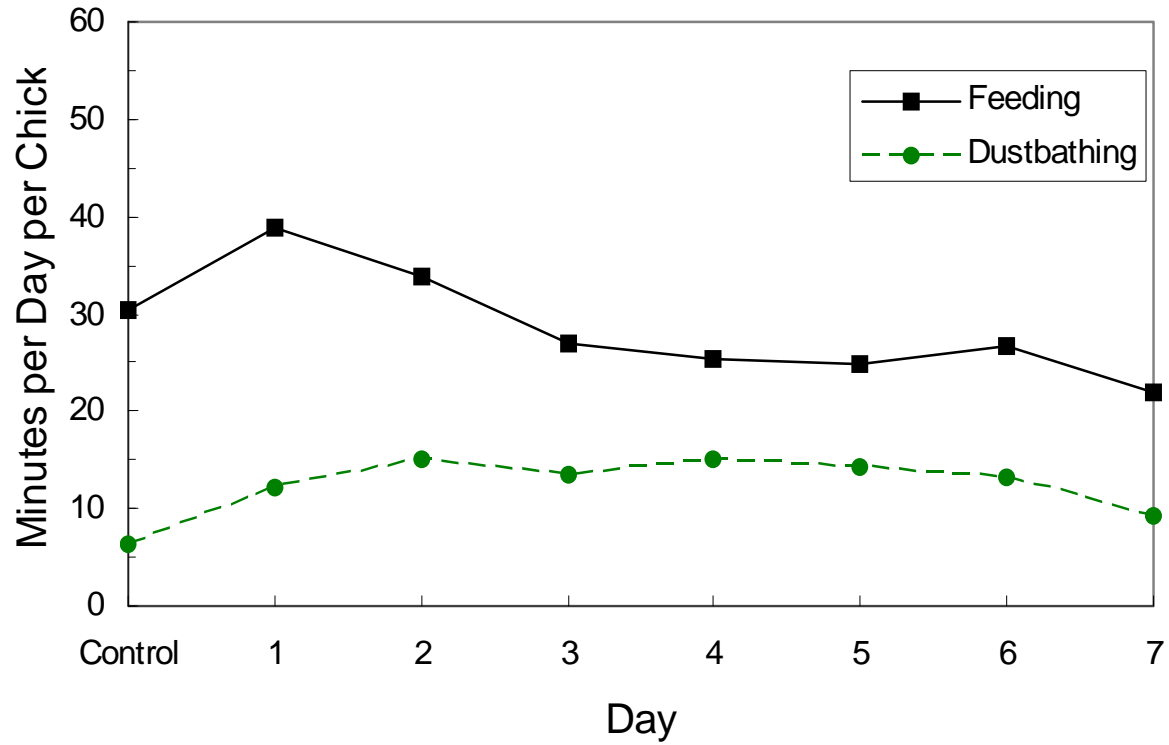


Autocorrelations - Dim Light



$\tau \approx 25.5$ hr

Total Daily Activity (Dim Light)



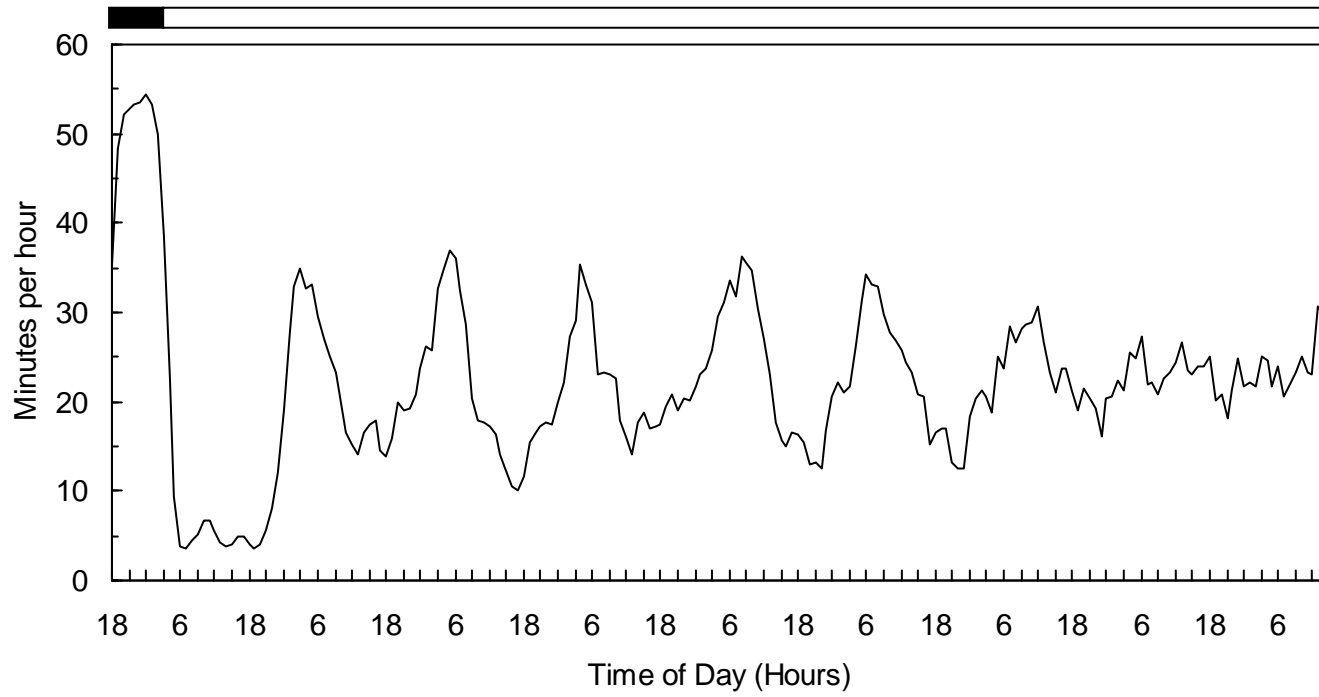
Sleep (and Dustbathing) Experiments

Chicks placed individually (rather than in pairs) into experimental cages (80-liter aquaria)

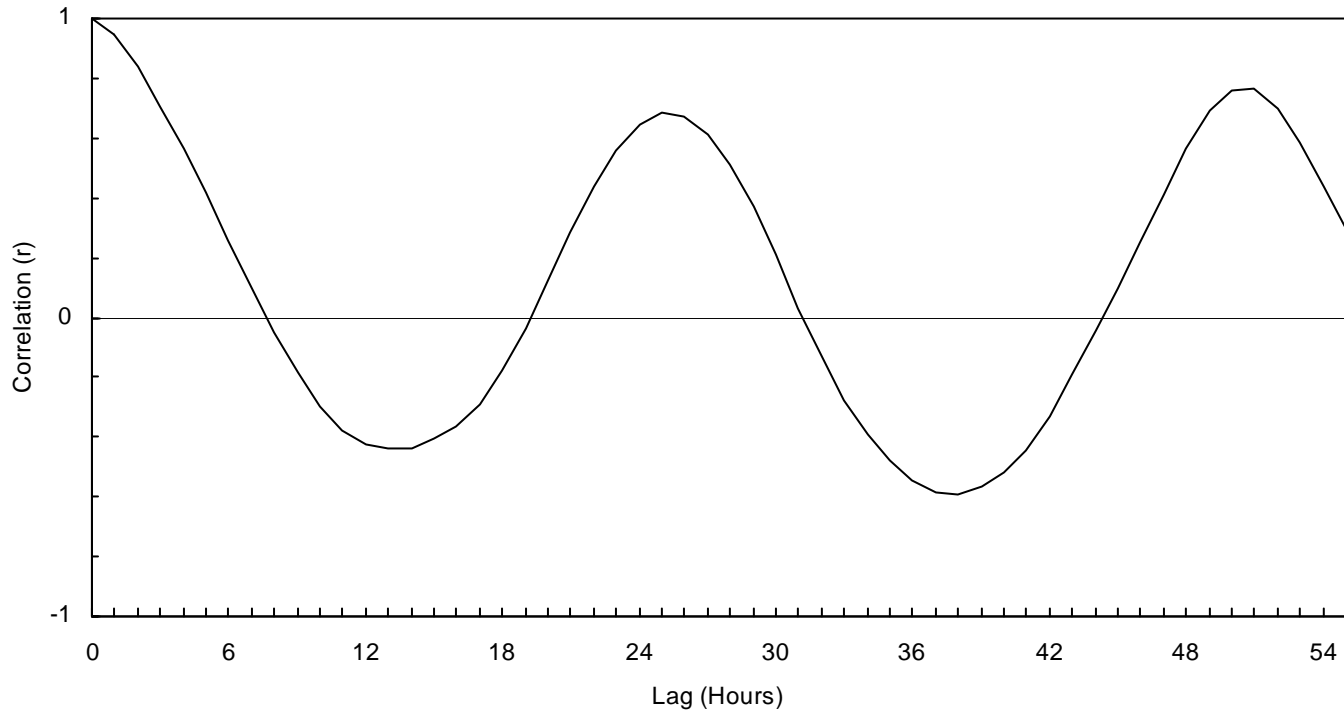
All behavior observed on video tapes

Two experiments: free run and development

Sleep LL (3-hr running average)

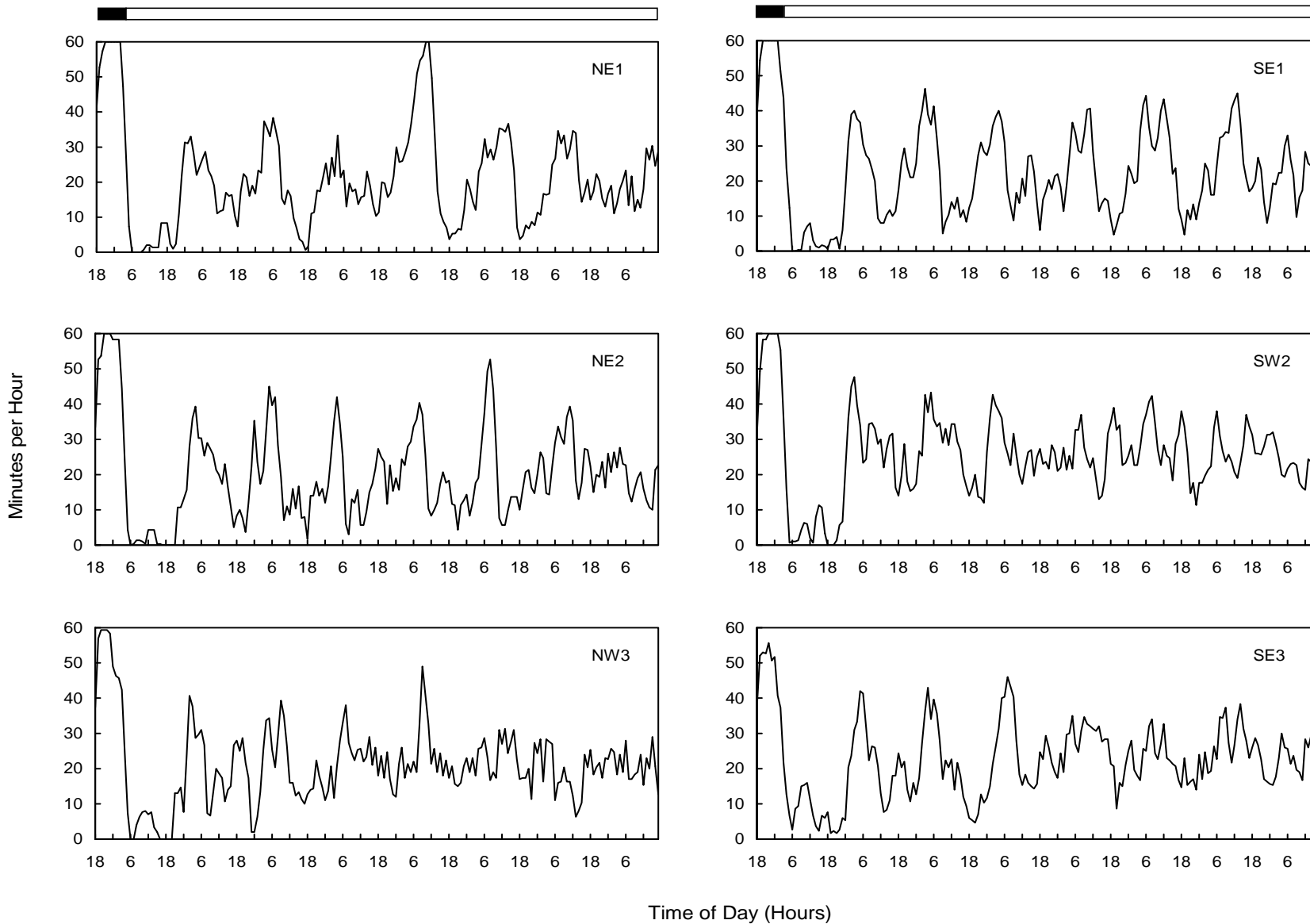


Autocorrelation -- Sleep LL

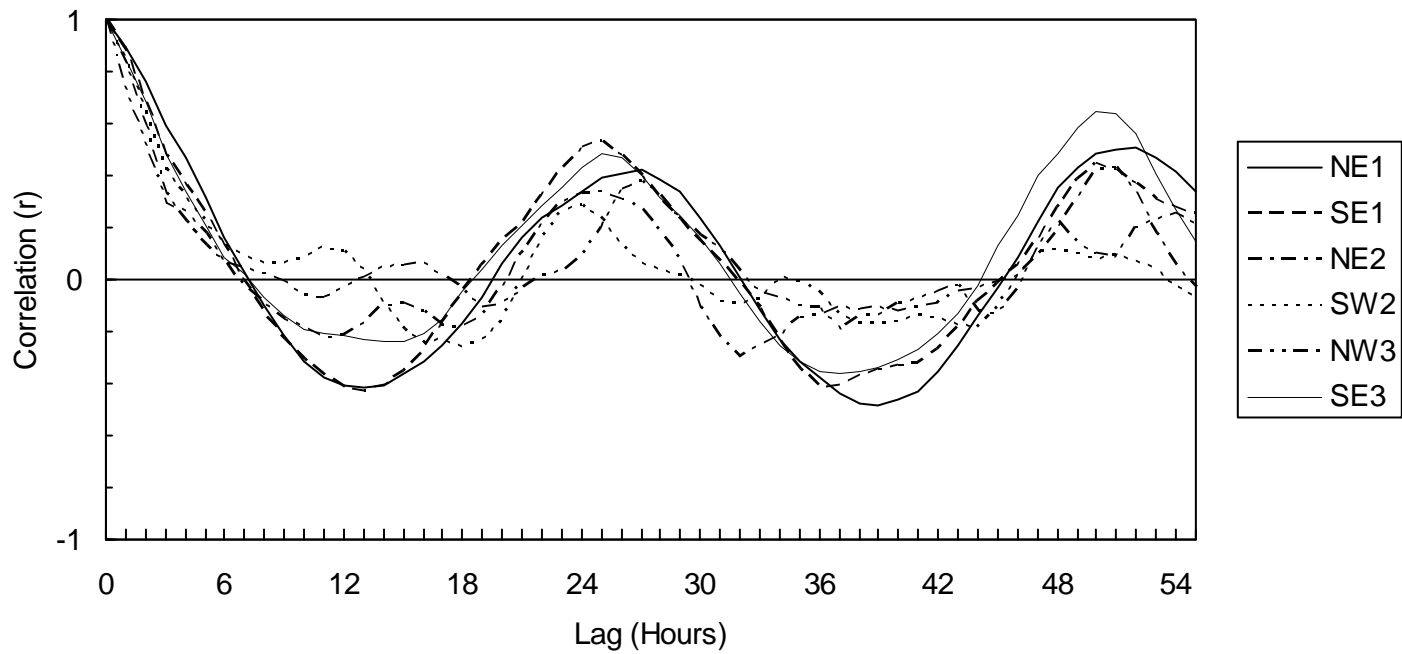


$\tau \approx 25.5$ hr

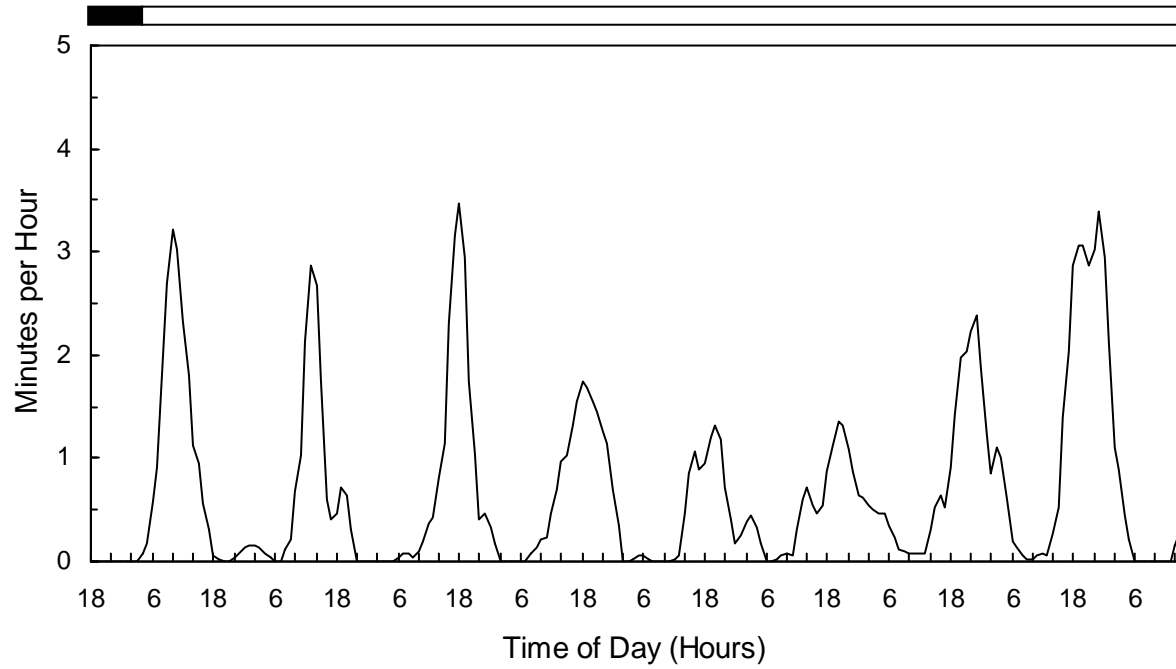
Individual Sleep LL (3-hr running average)



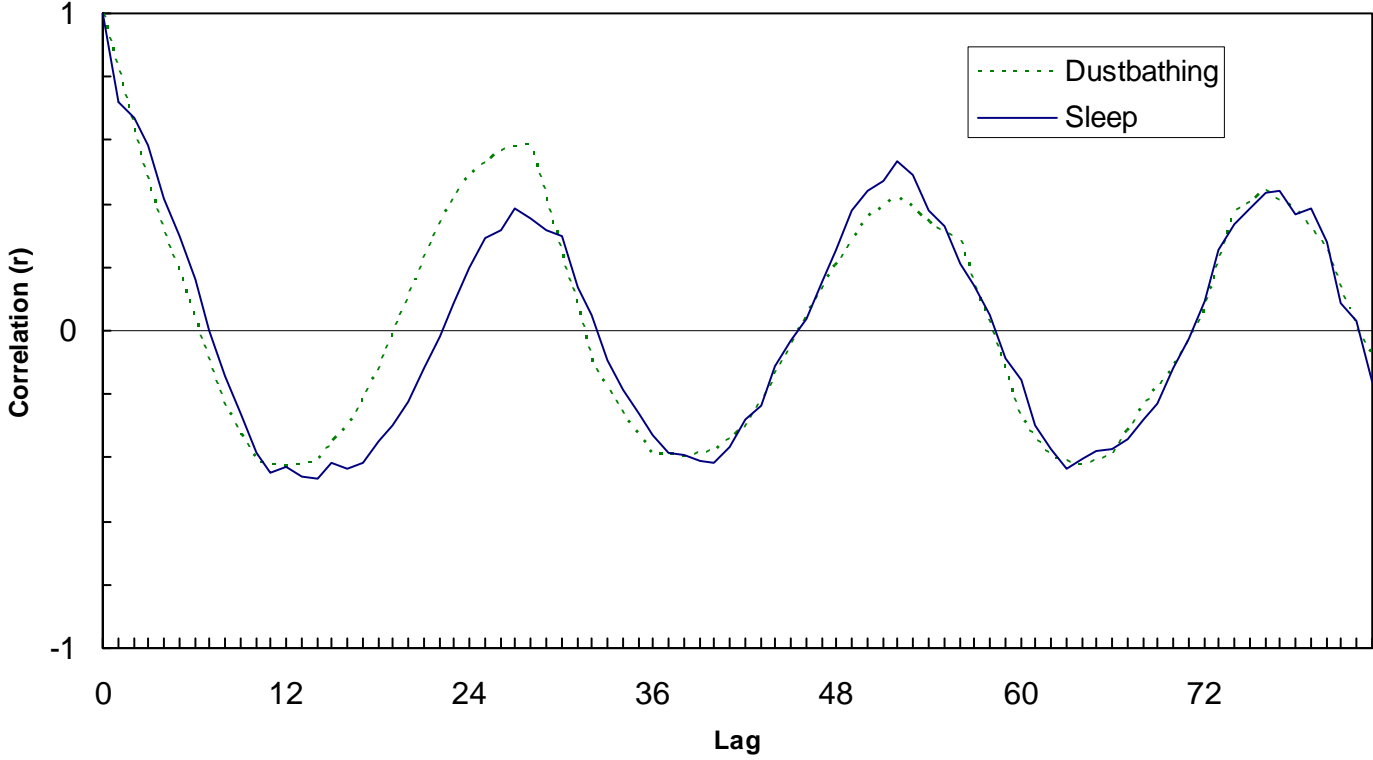
Individual Autocorrelations -- Sleep LL



Dustbathing LL (3-hr running average)



Autocorrelations LL



Free run experiments: Conclusions

In constant light (LL), feeding, dustbathing, and sleep all show a free-running rhythm with a period of about 25.5 hours. Thus, there is definite circadian control of these behaviors, probably by the same clock.

For feeding and sleep, but not for dustbathing, rhythm damps out after about 6 days.

Individual variability greater than averaged variability

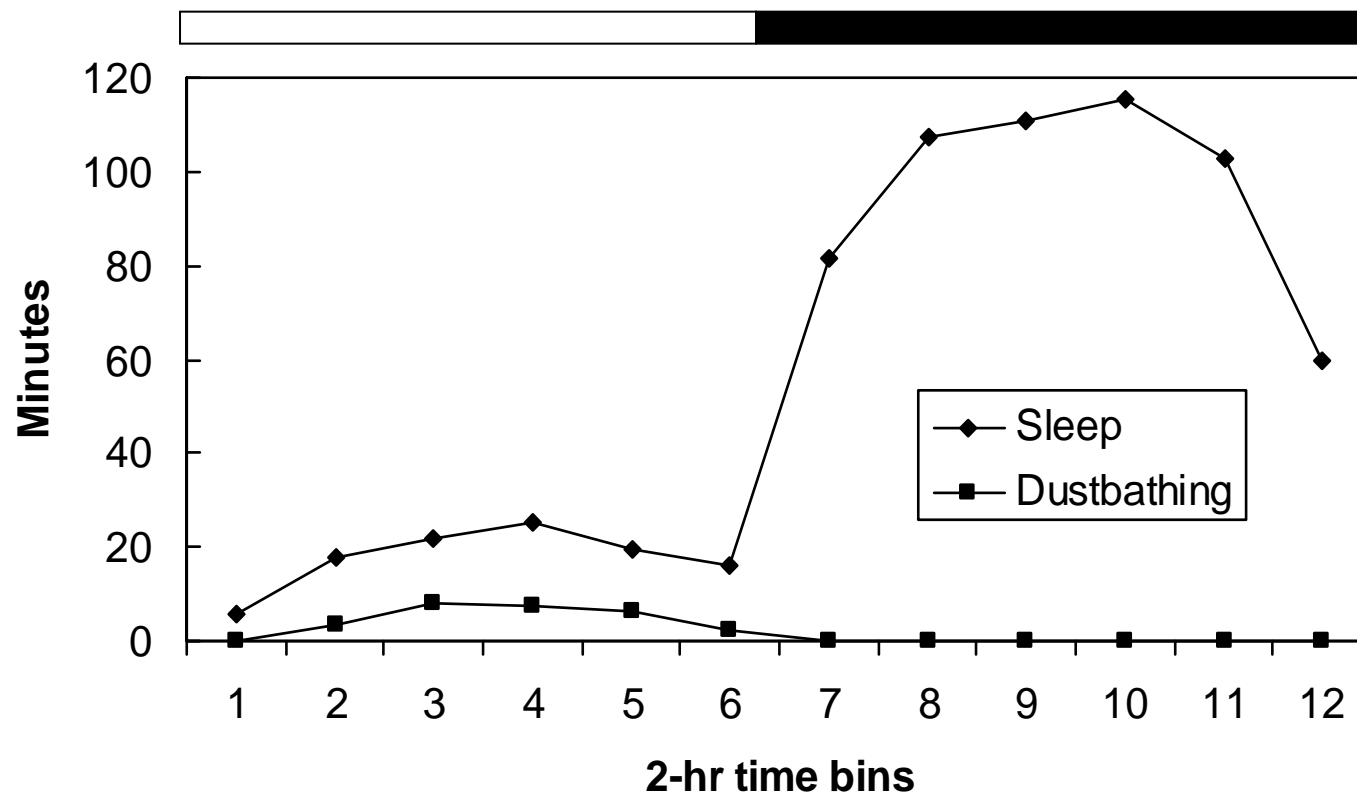
Feeding and sleep seem only “loosely” connected to the circadian system.

Development of sleep (and dustbathing)

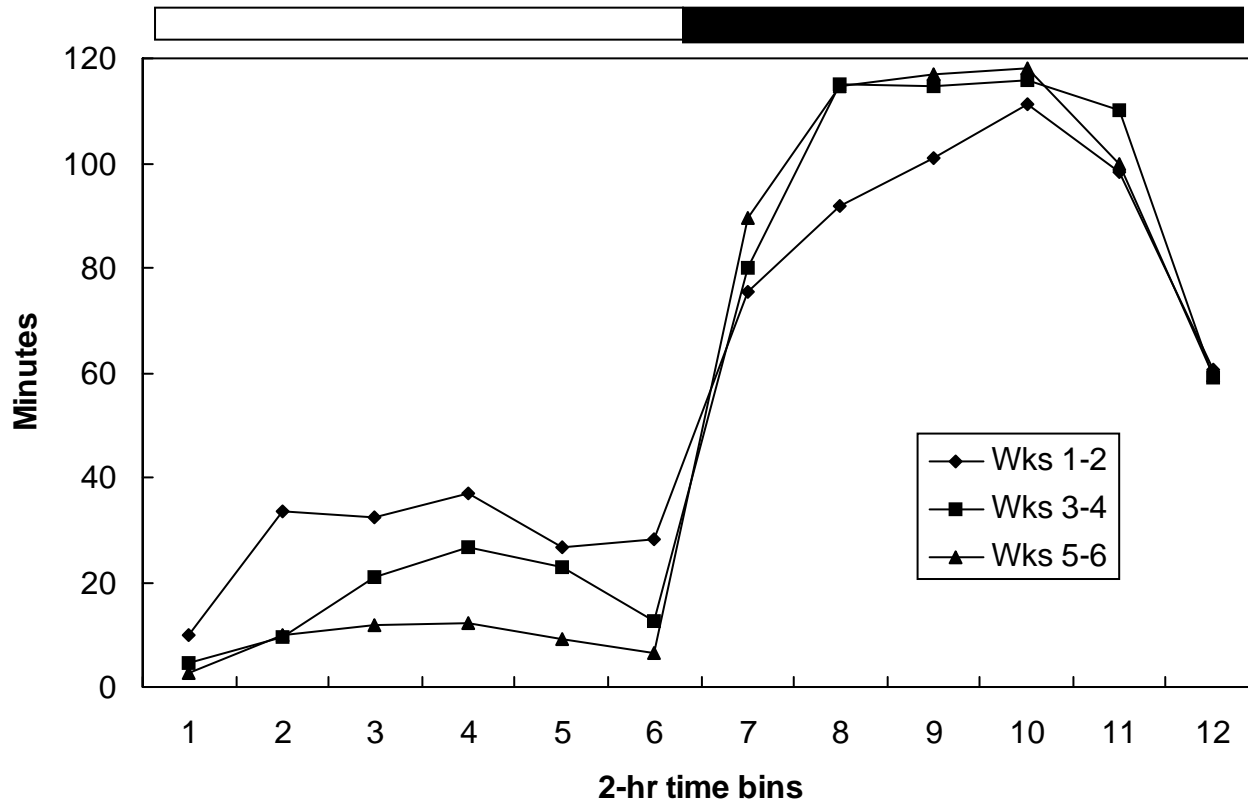
Chicks raised from hatching either under 12:12 L:D conditions (control) or under constant light (LL) conditions (experimental) for 6 weeks.

Each chick was monitored, and sleep (and dustbathing) recorded, for 24 hours once each week from video tapes.

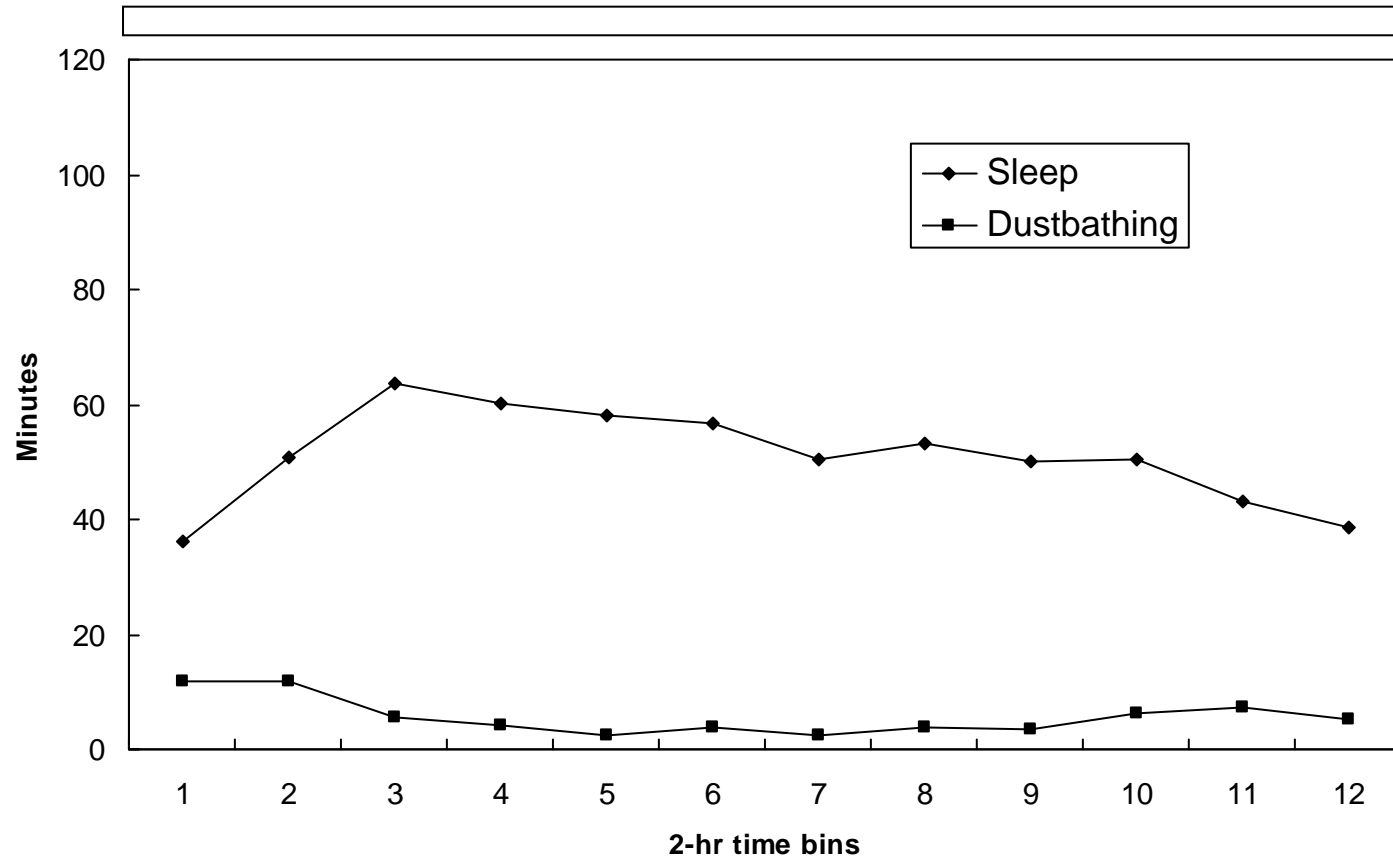
Control (12:12 L:D)



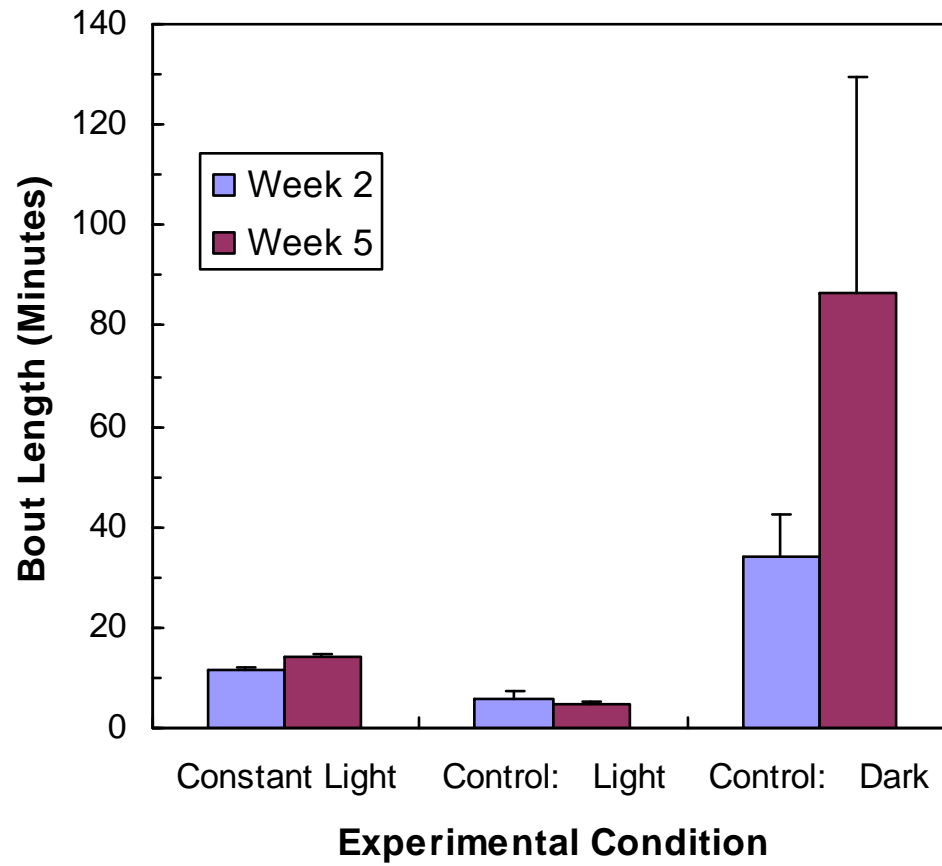
Sleep Control (12:12 L:D)



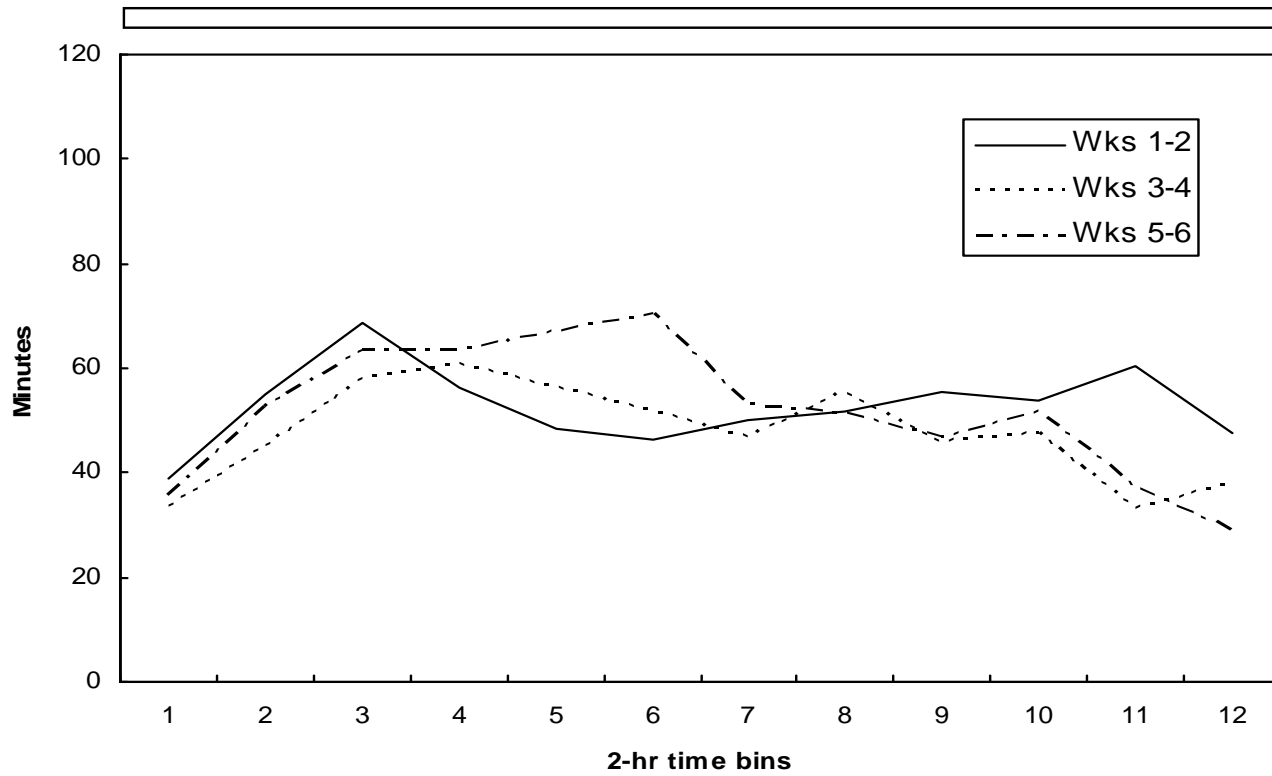
Experimental (Constant Light)



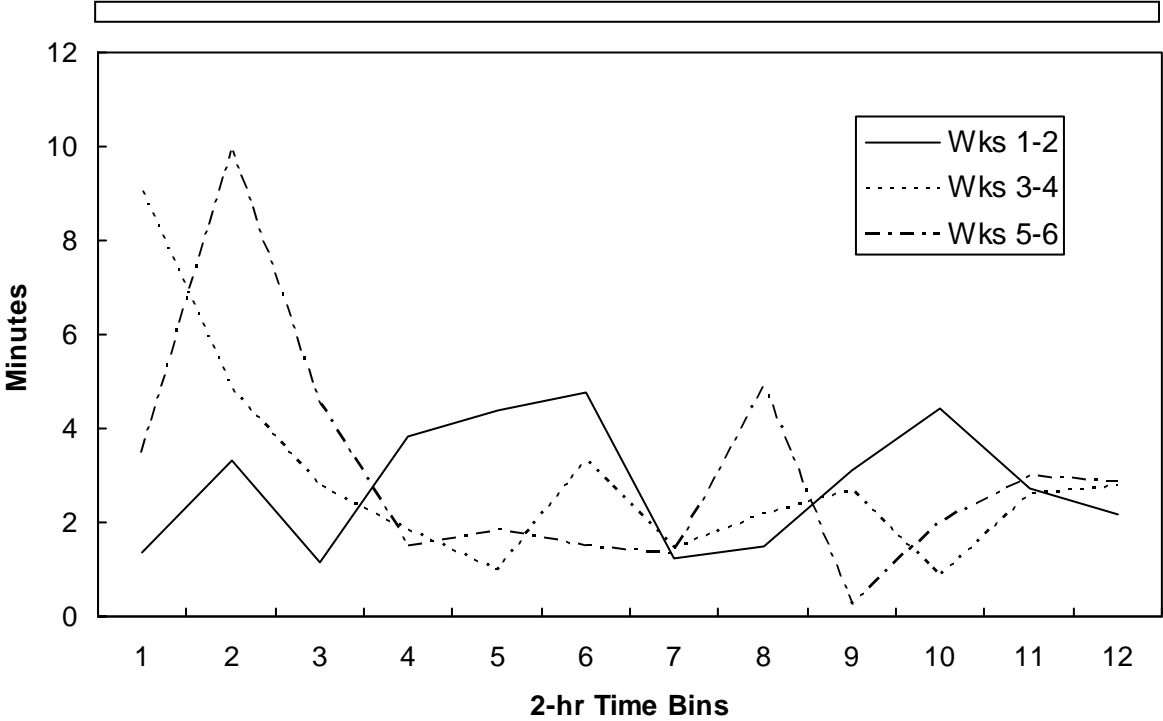
Sleep Bouts



Experimental Sleep (Constant Light)



Experimental DB (Constant Light)



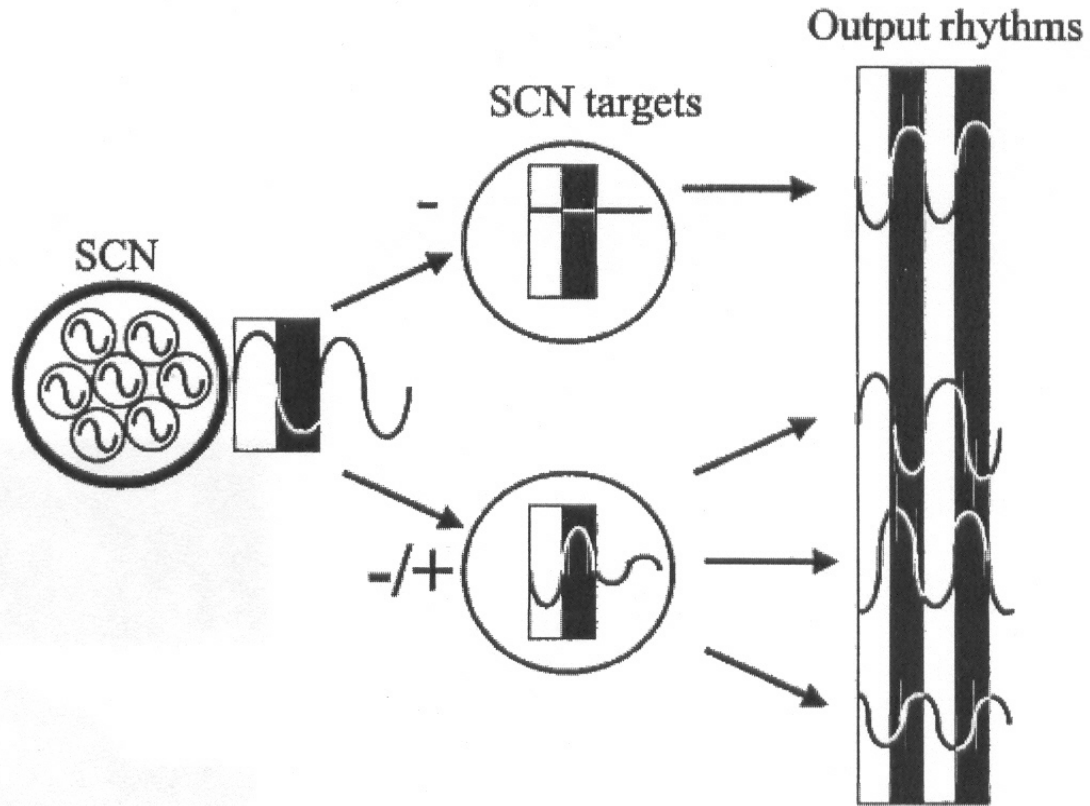
Development experiment: Conclusions

Under 12:12 L:D conditions, chicks sleep primarily during the dark hours from the first week, and this pattern grows stronger with age

Chicks raised under constant light show only weak signs of circadian control of sleep, and sleep in bouts of about 15 minutes throughout the 24-h day

The results suggest that periodic disturbance can entrain the clock, but without a light:dark cycle sleep is controlled primarily by its own specific internal causal factors

Model of organization of mammalian circadian system



Herzog & Schwartz, 2002

Discussion

How does the circadian system control behavior?

What kind(s) of experience is necessary for sleep and feeding to become “attached to” or “detached from” the circadian system?

Why is dustbathing different from sleep and feeding?

How is sleep controlled in humans?

How do normal sleep patterns develop in infants?

What does this all mean?

