

Deaths in Greater London each day from Dec. 1 to 15, 1952.

Utah - USA

Pope et al, AJPH 79:623-628, 1989

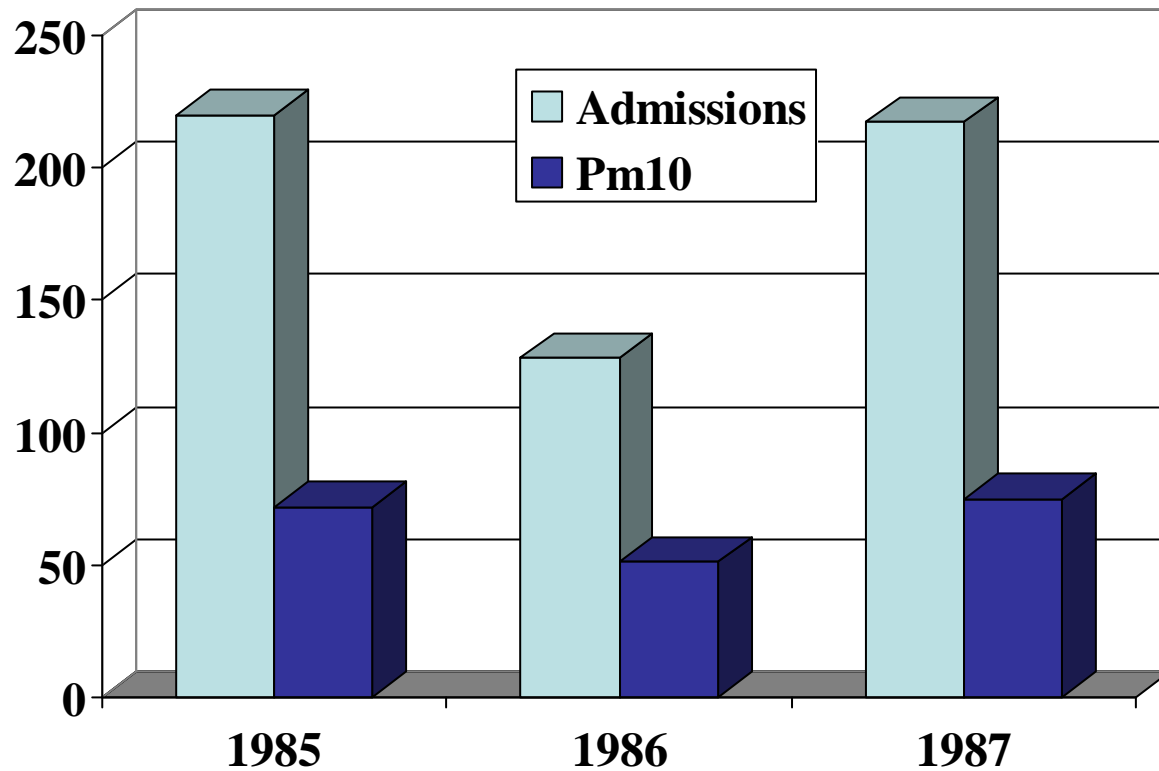




Image © 2005 DigitalGlobe

© 2005 Google

3°33'18.82" S 46°40'15.23" W elev 2697 ft

Streaming ||||| 100%

Eye alt 4184 ft



Image © 2005 DigitalGlobe

© 2005

Google



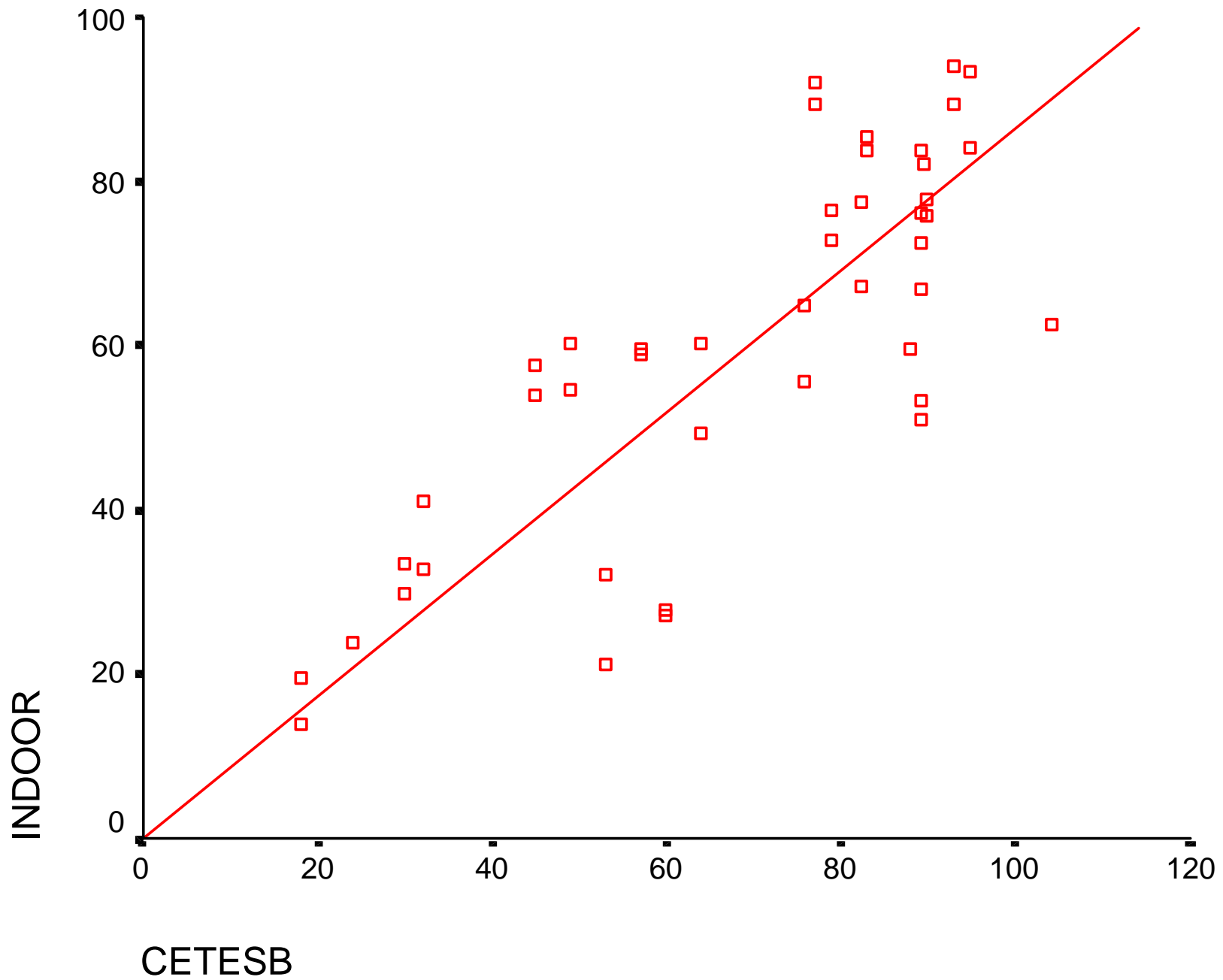


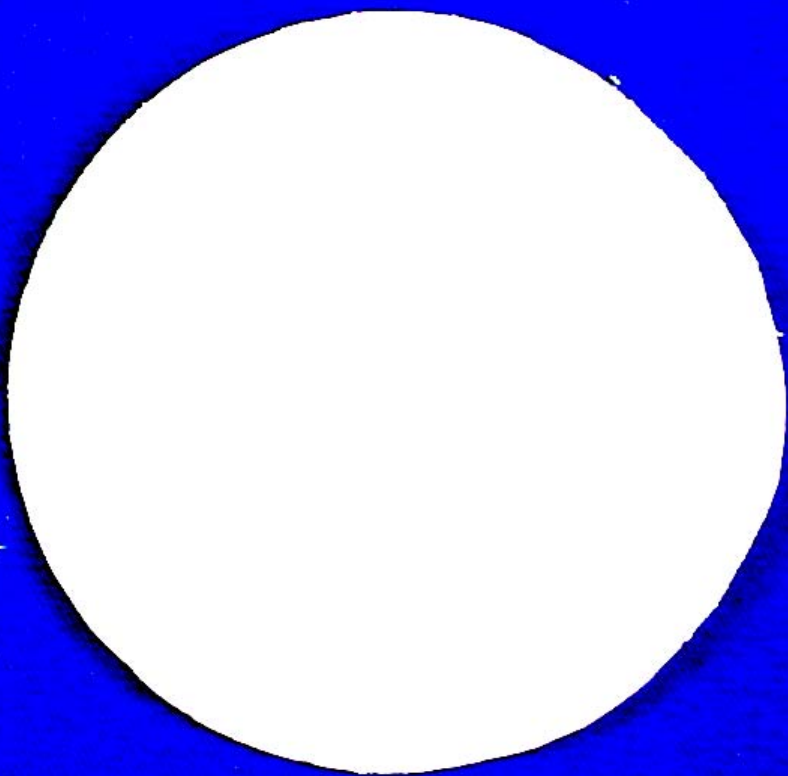
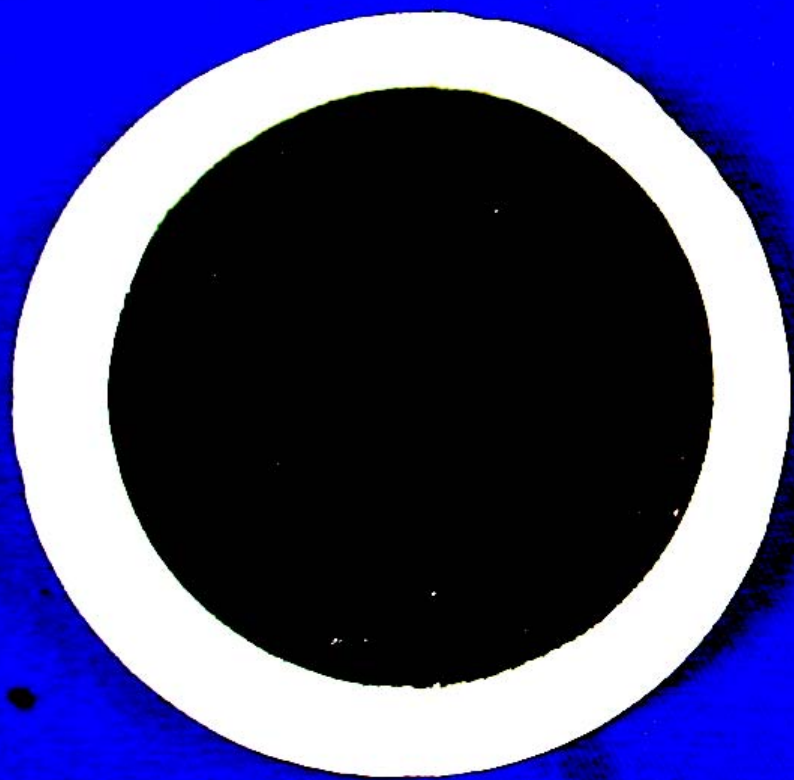


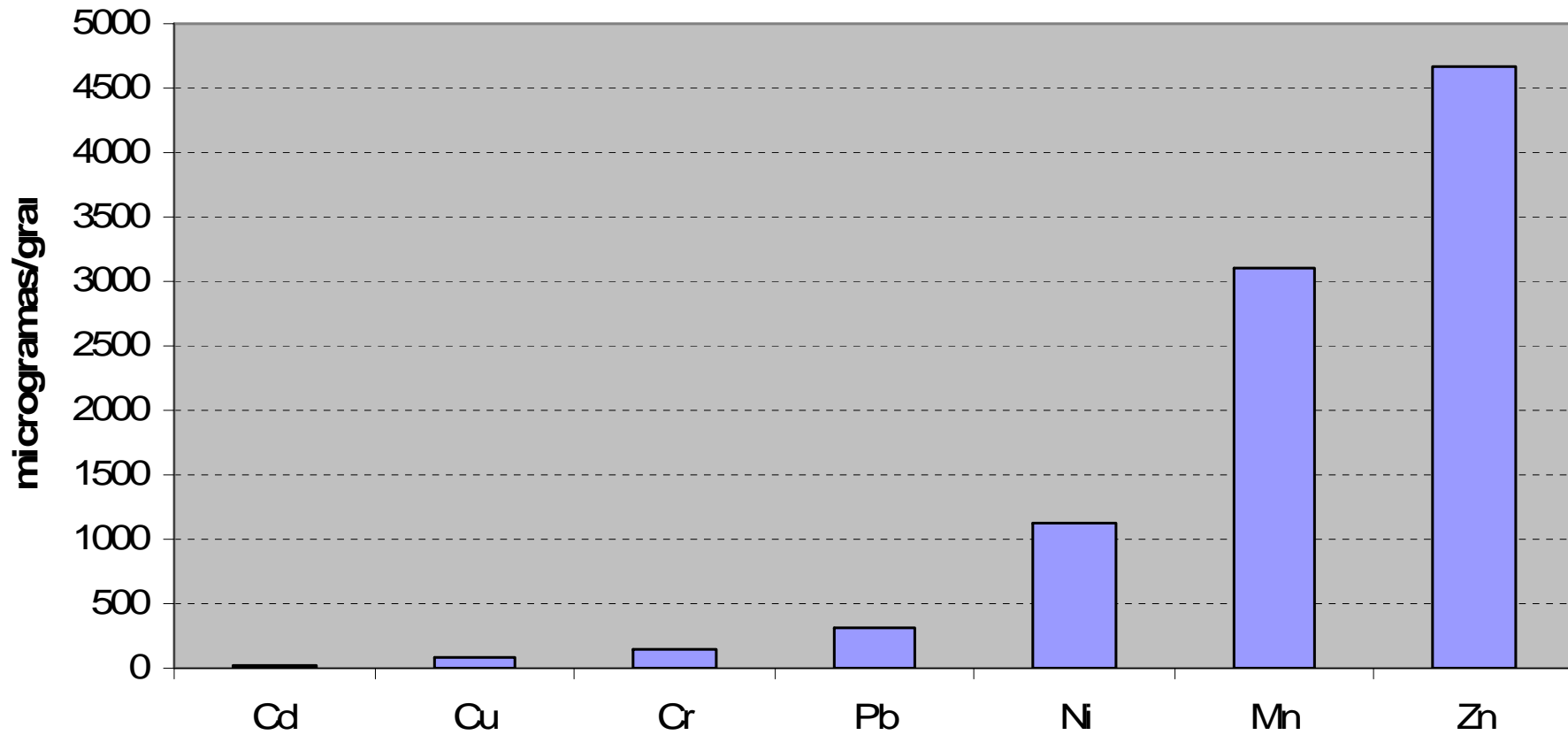


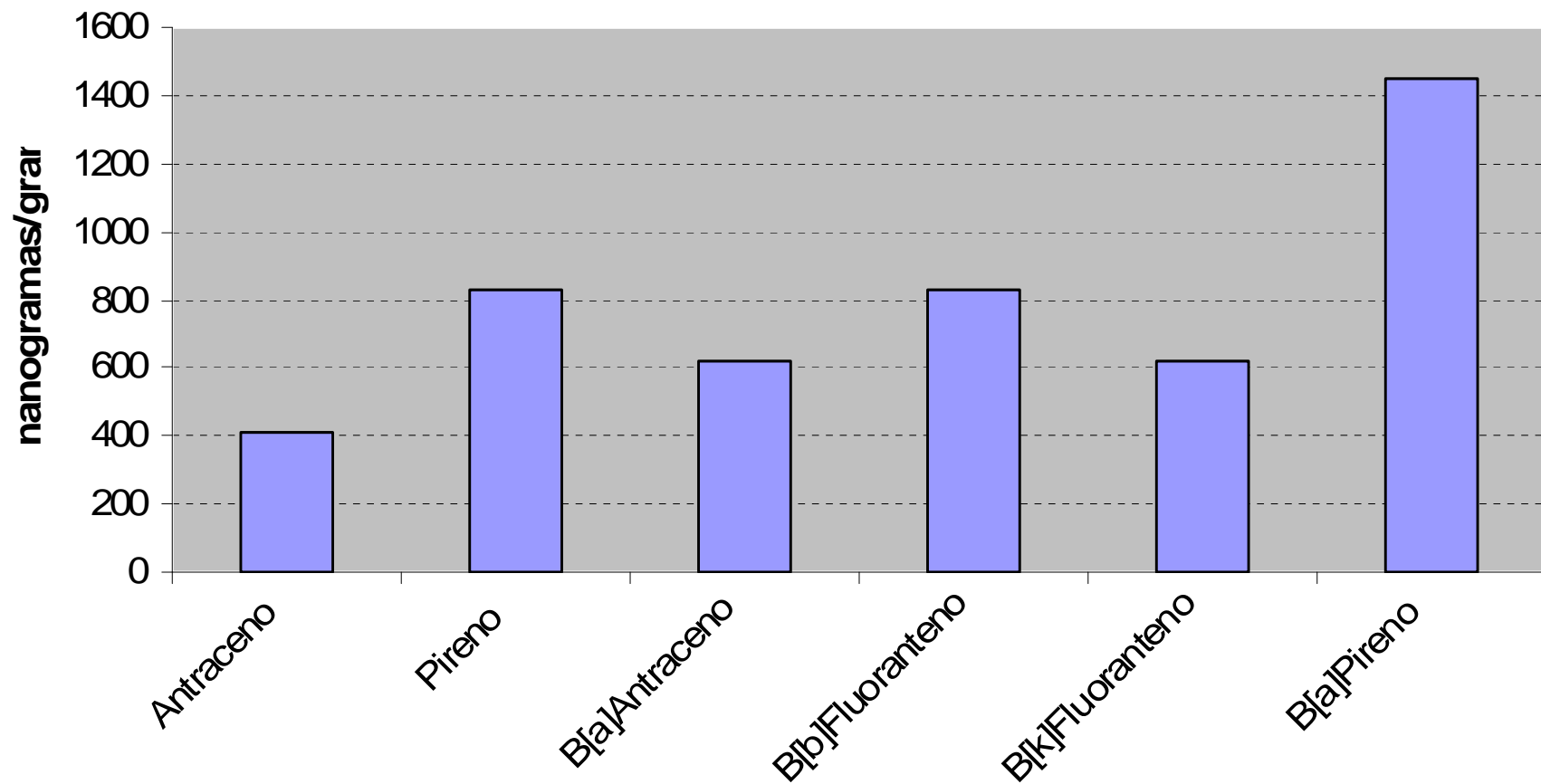


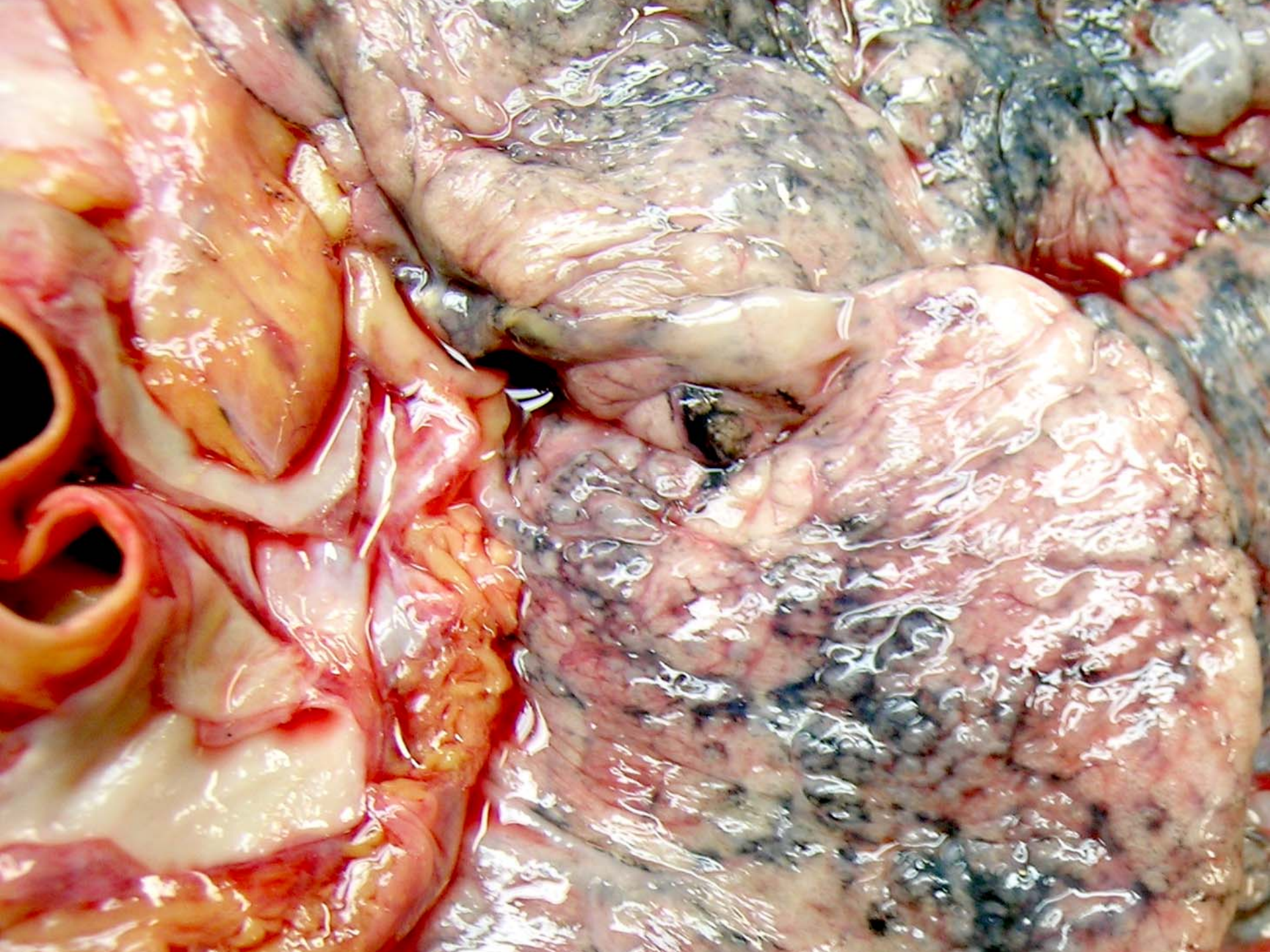
13. 6. 2001 11:24

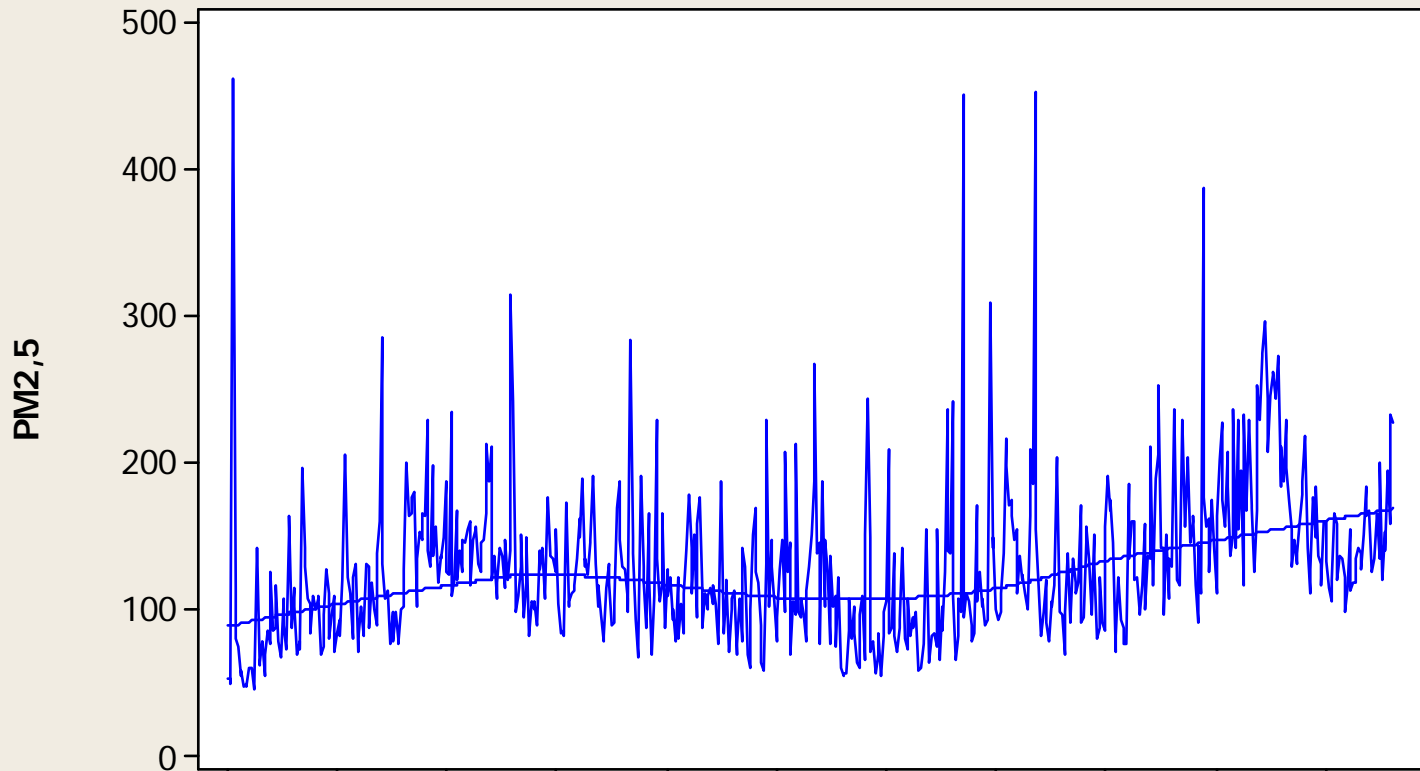




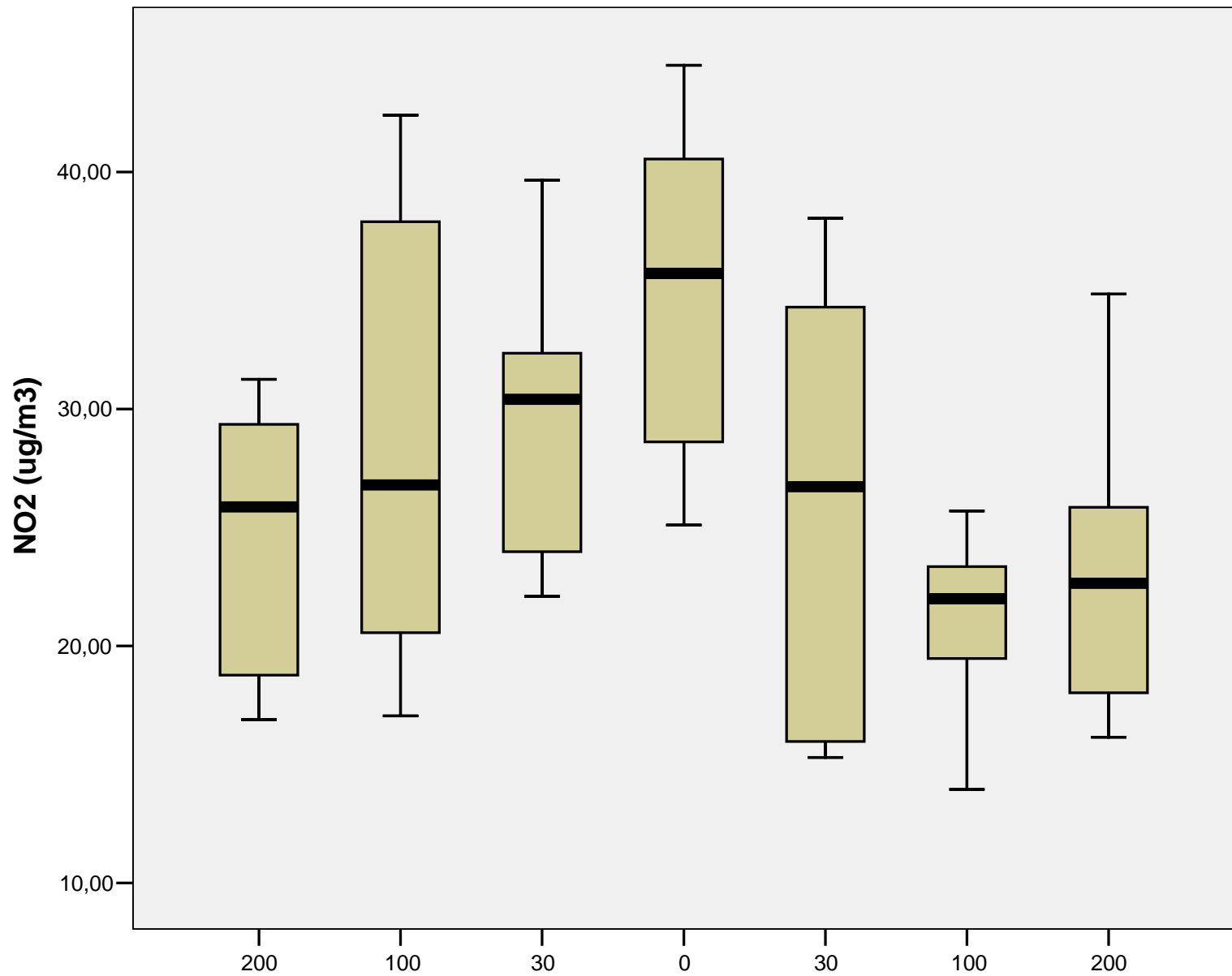


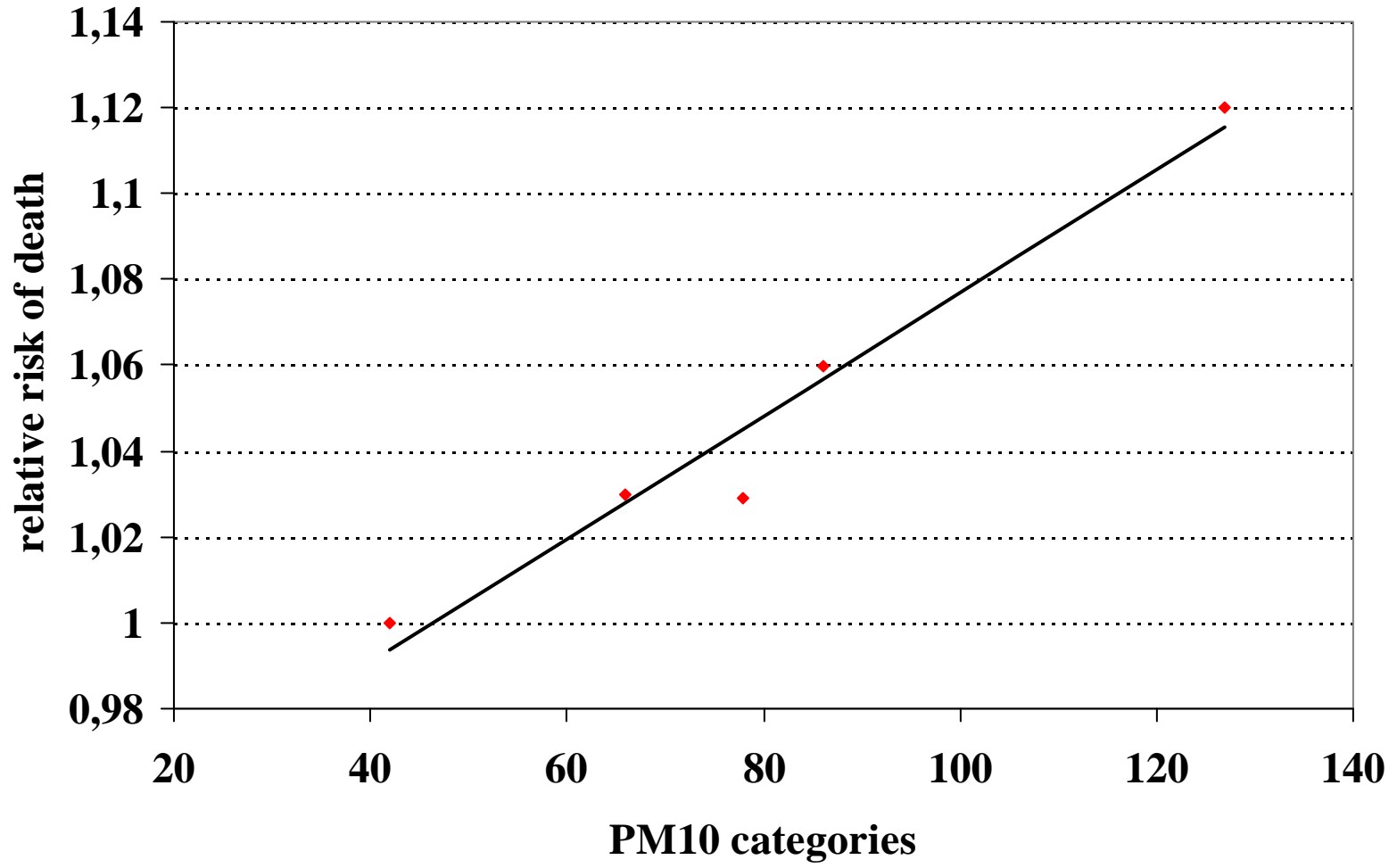


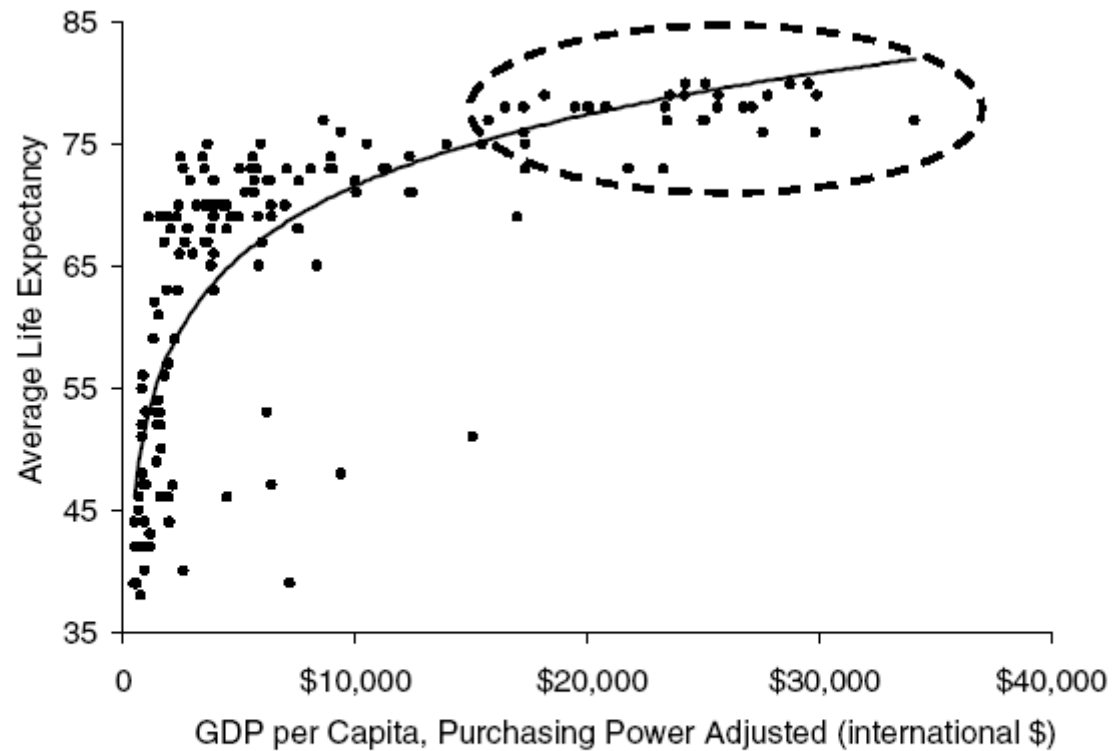




Second	23	23	23	23	23	23	23	23	23	23
Minute	37	37	37	37	37	37	37	37	37	37
Hour	6	7	8	9	10	11	12	13	14	15

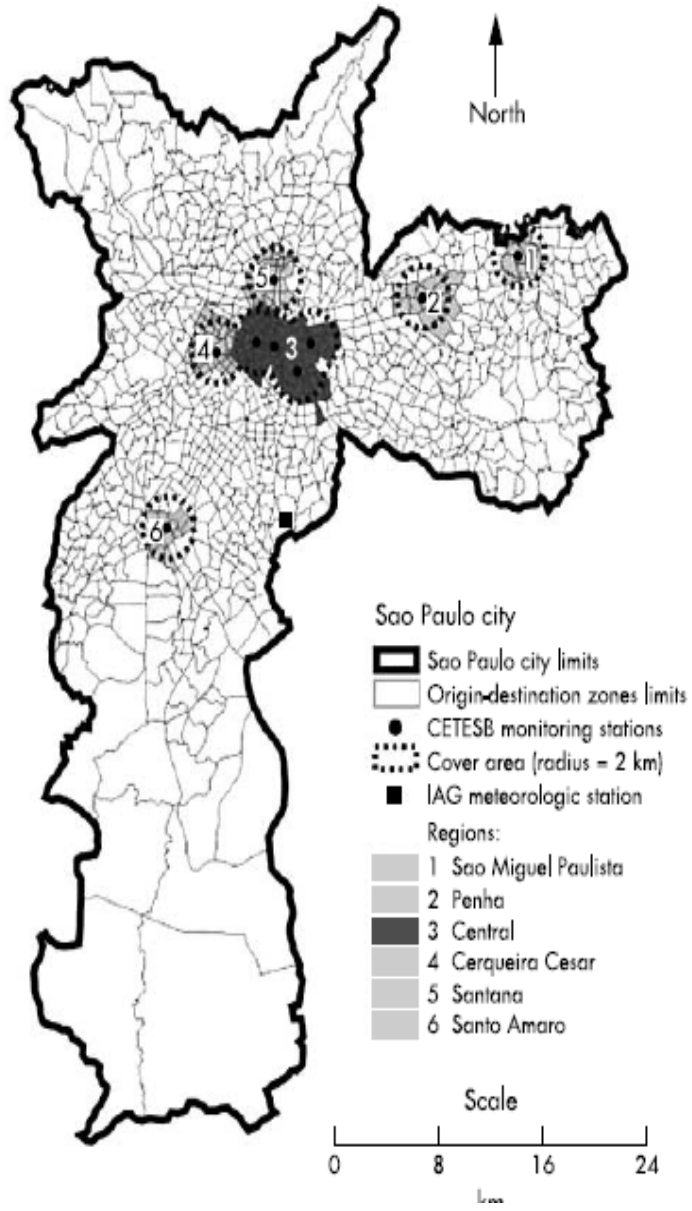






Note: Because of its very high GDP, Luxembourg was excluded to simplify the visual presentation (life expectancy = 77, GDP = \$50,061).

Source: World Bank 2002.



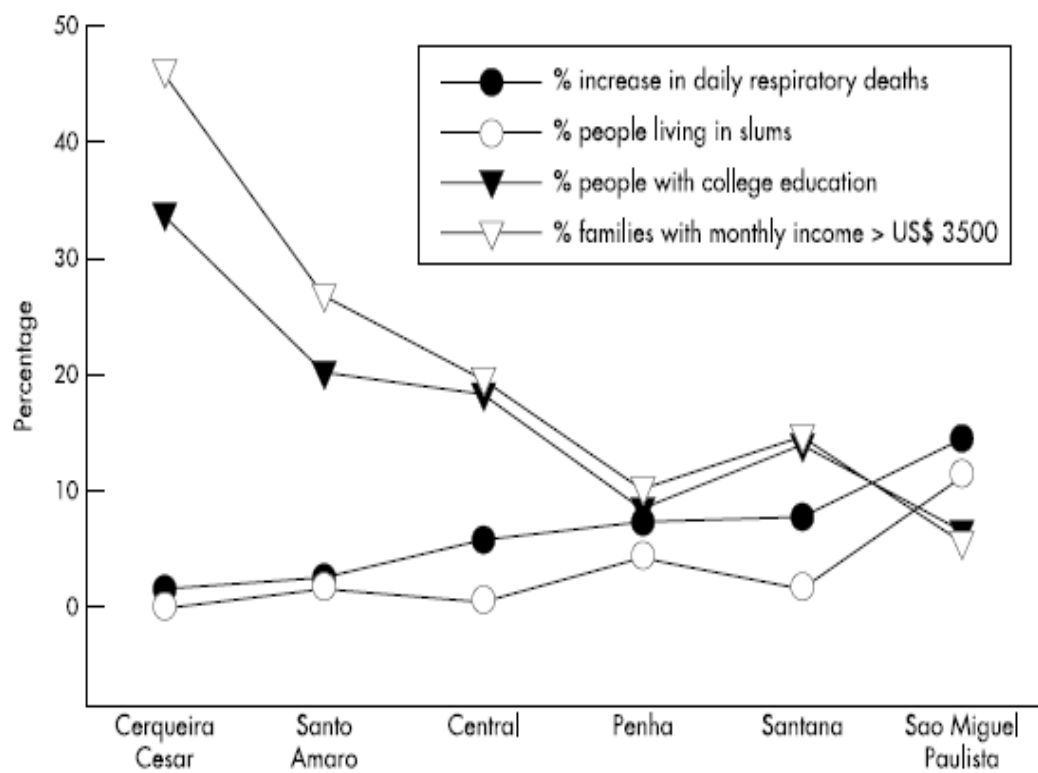
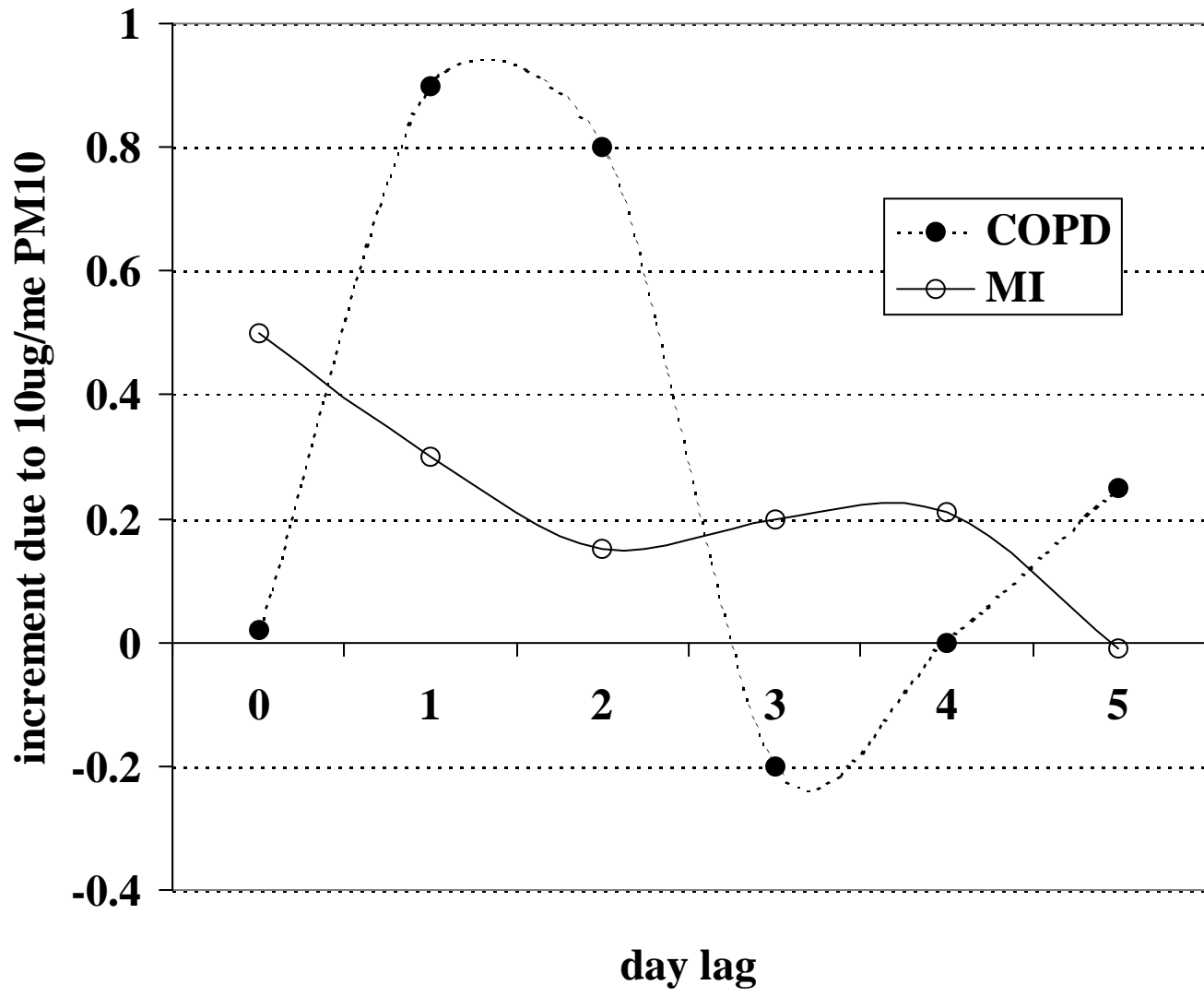
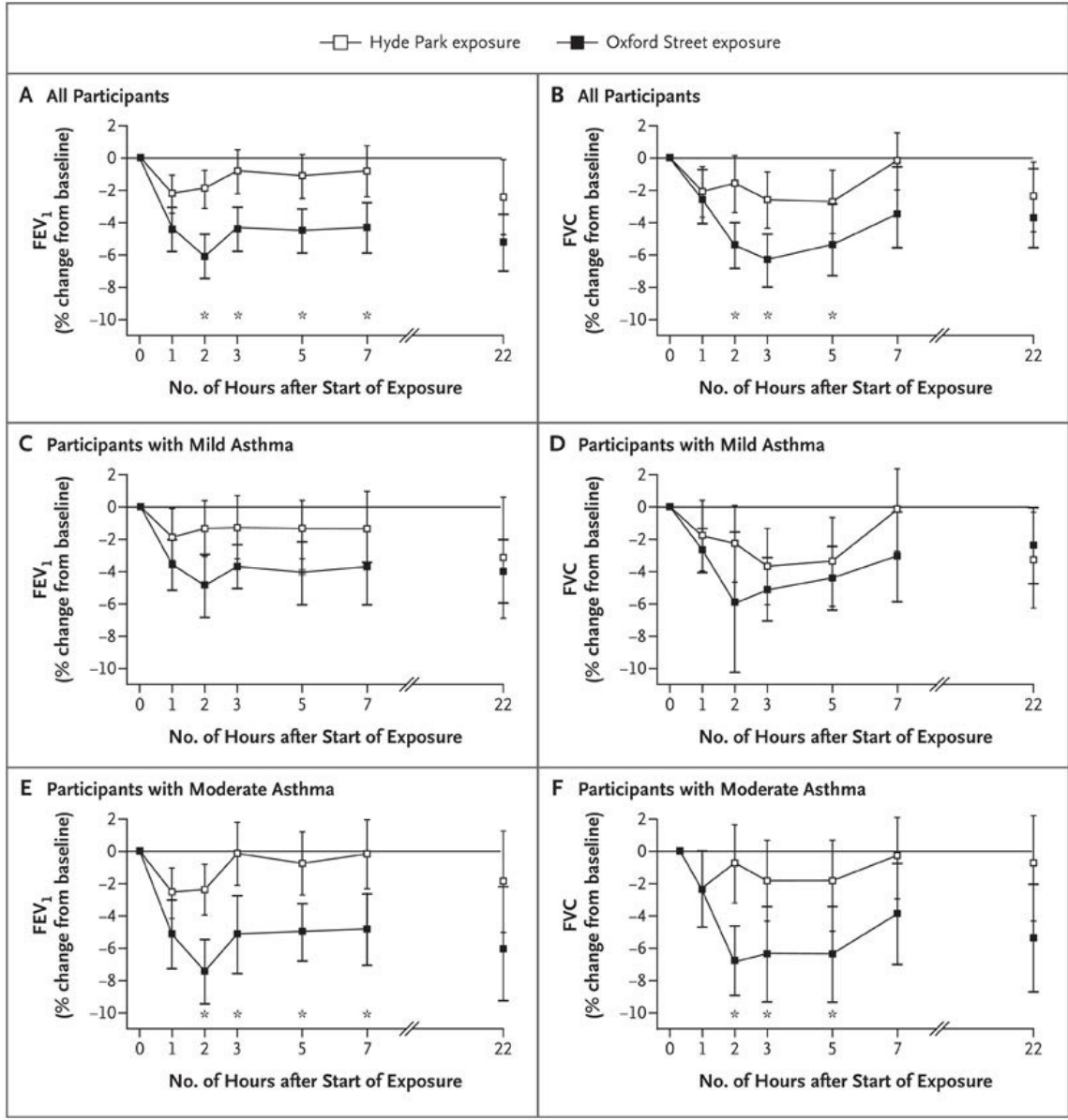
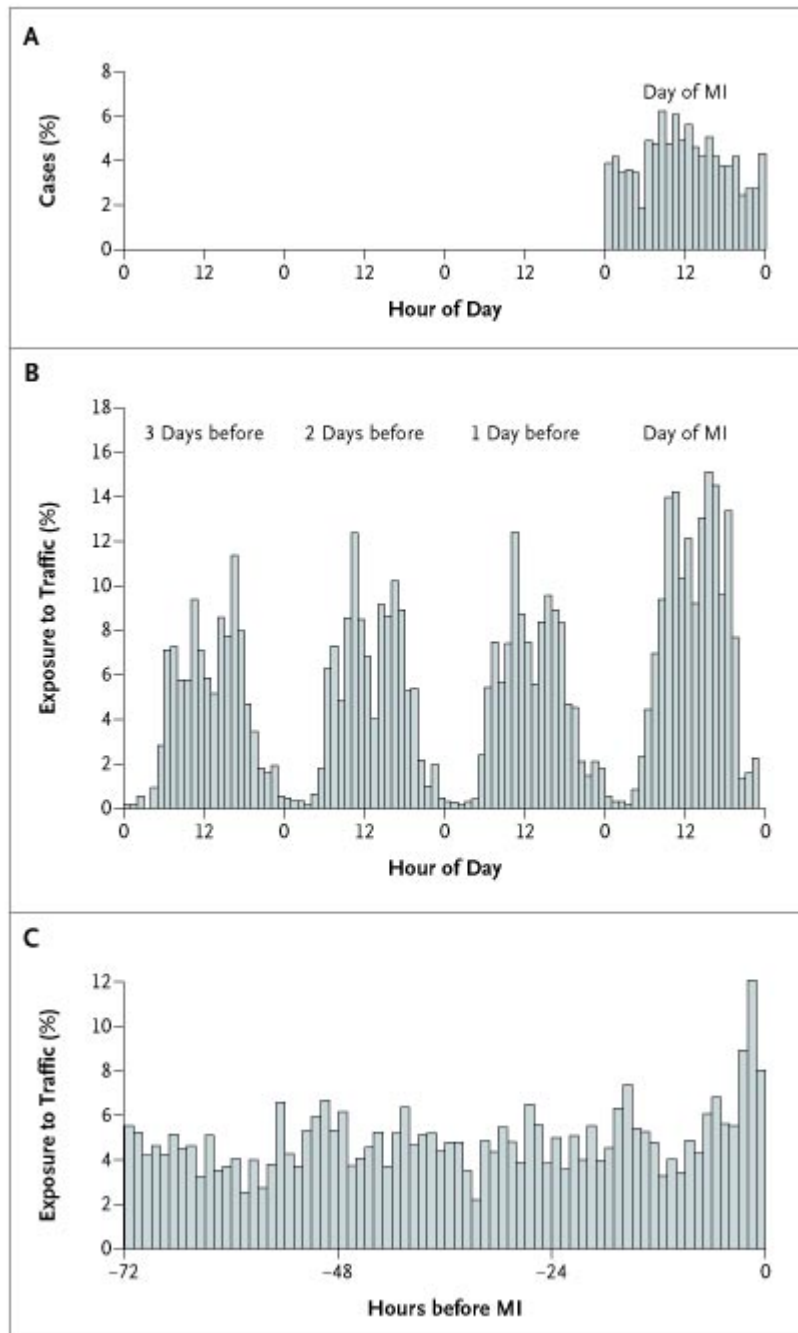
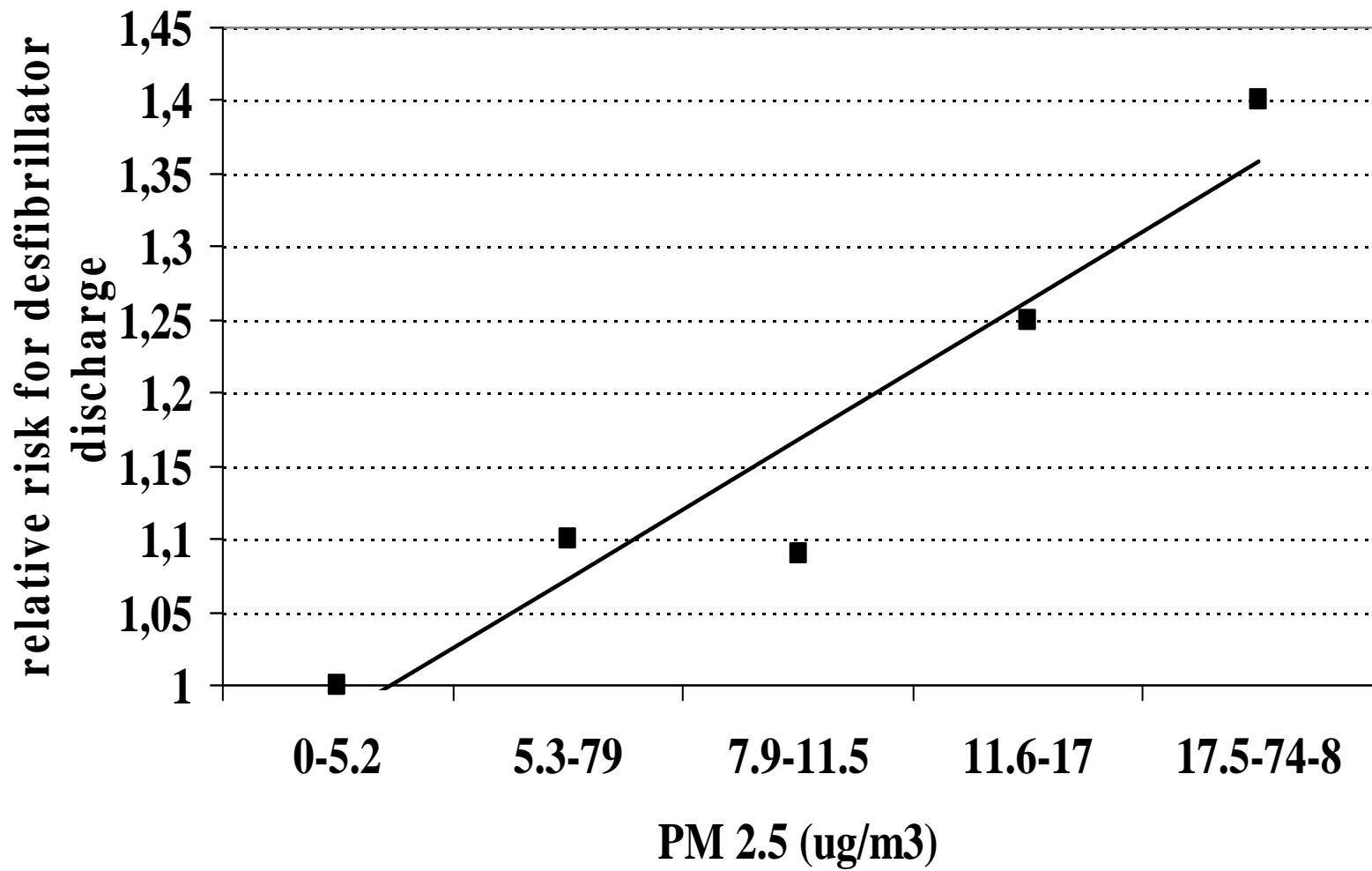


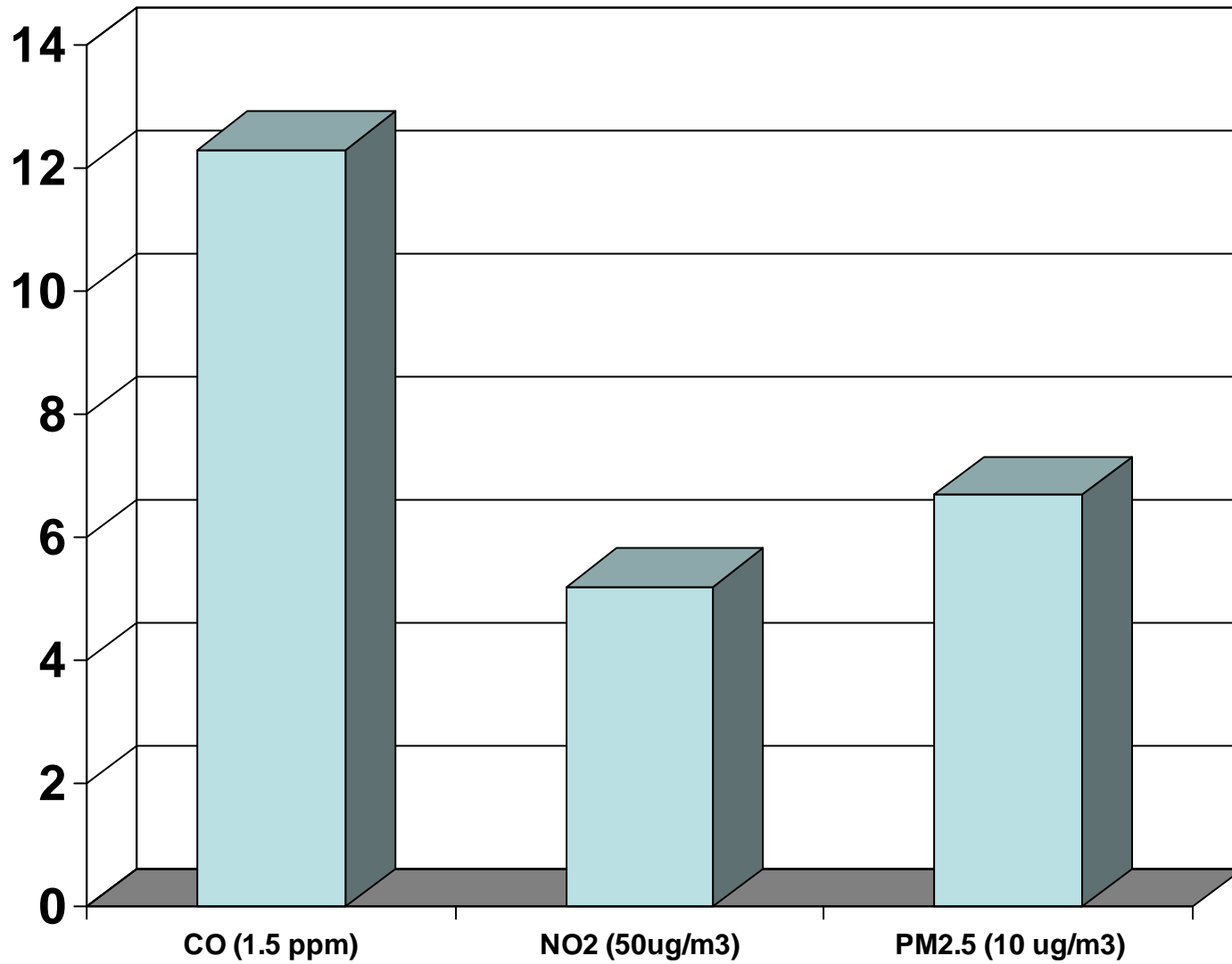
Figure 3 Percentage increase in daily respiratory deaths attributable to a $10 \mu\text{g}/\text{m}^3$ increase in three day moving average of PM_{10} and socioeconomic indicators in each region of the study.

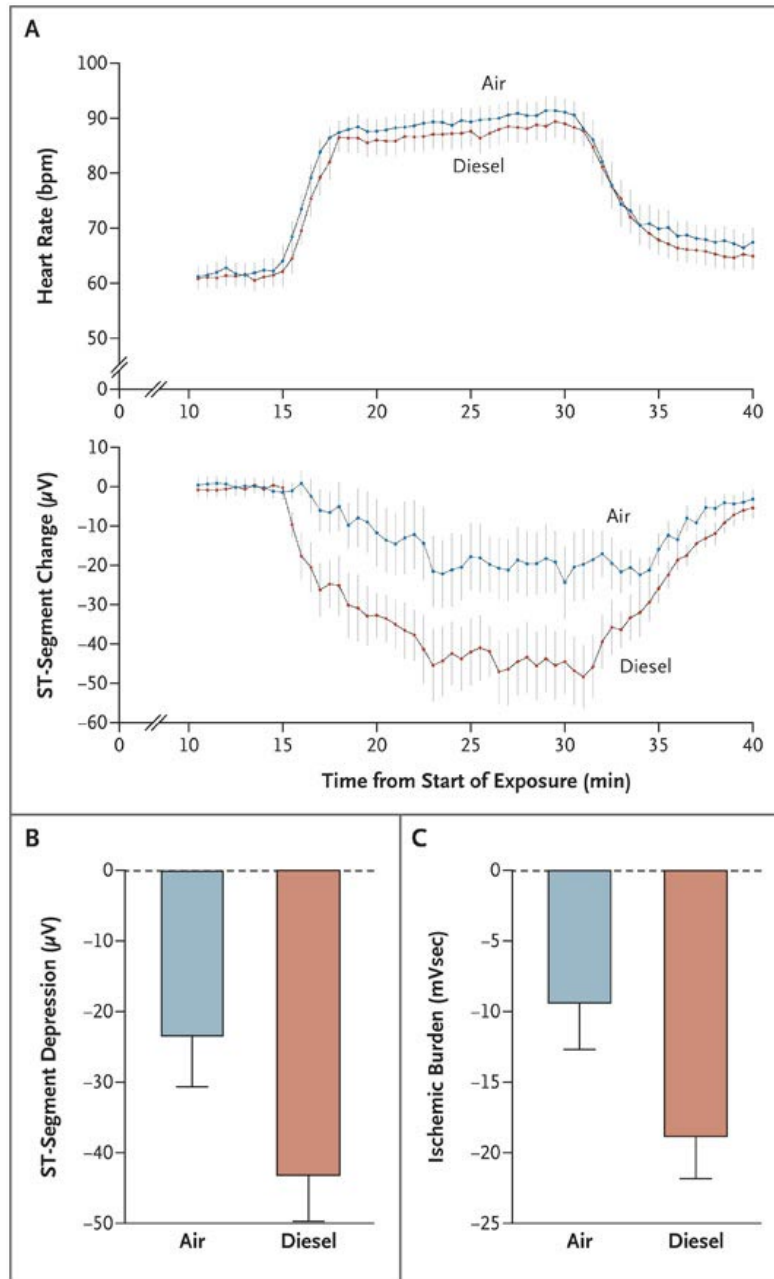


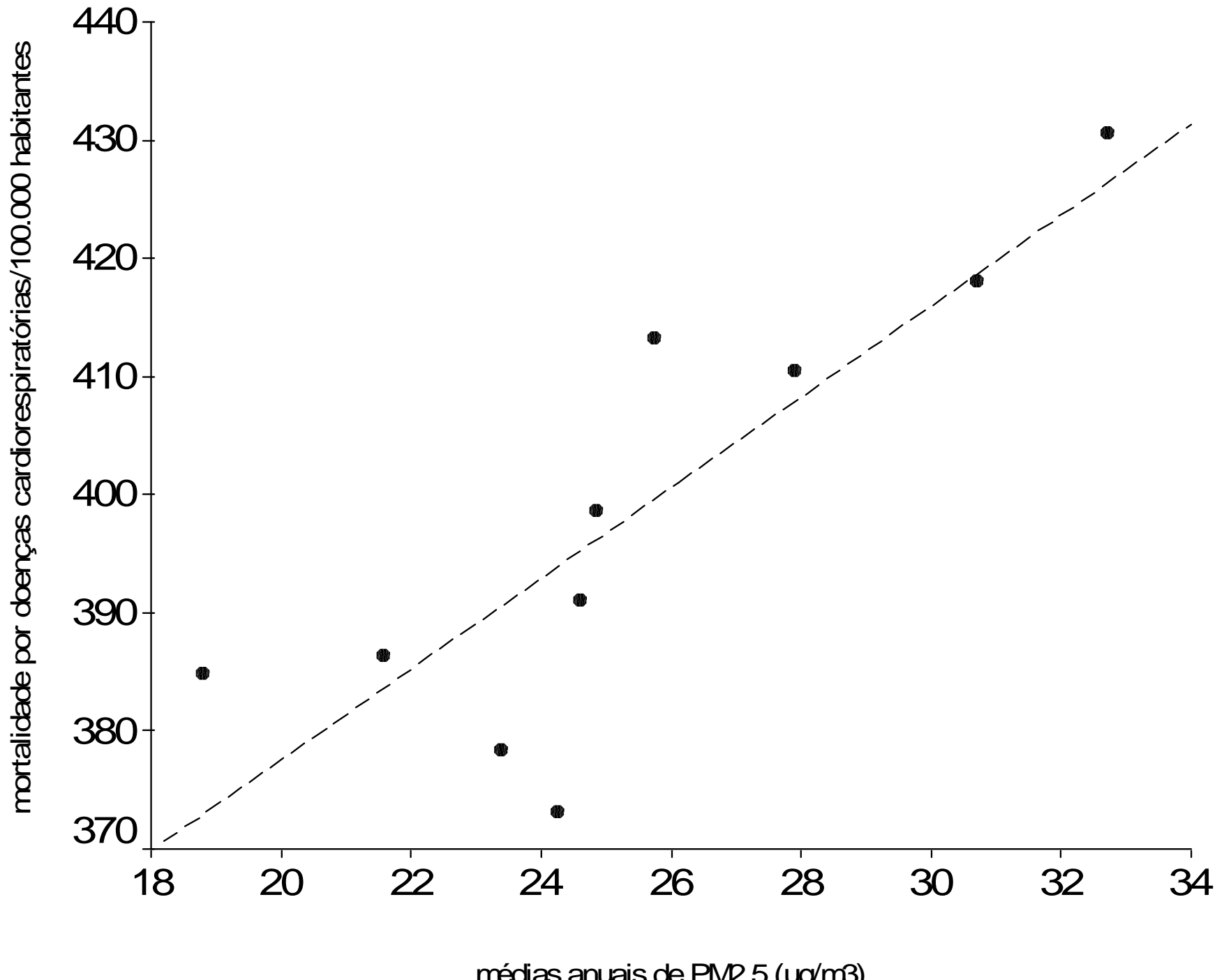


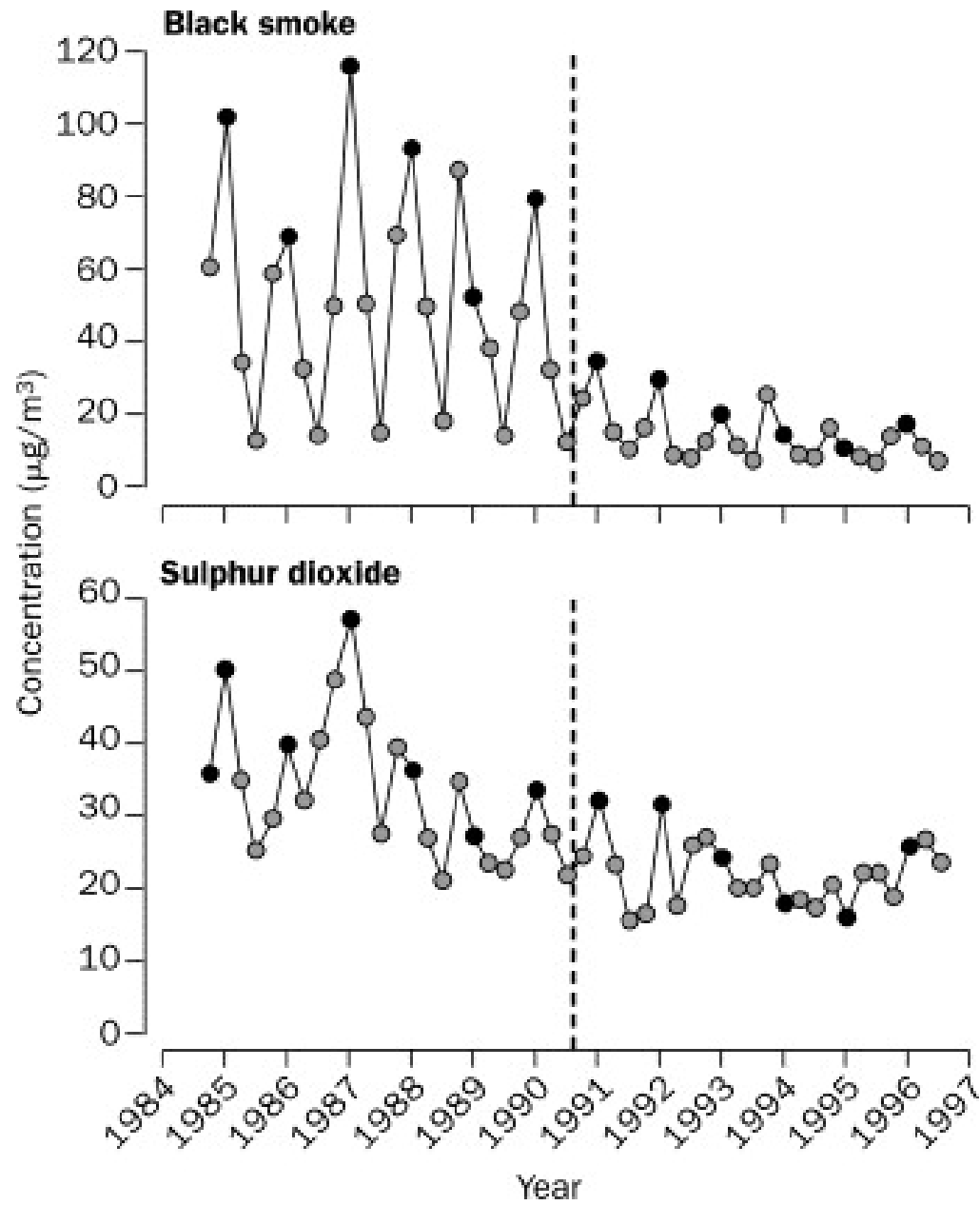


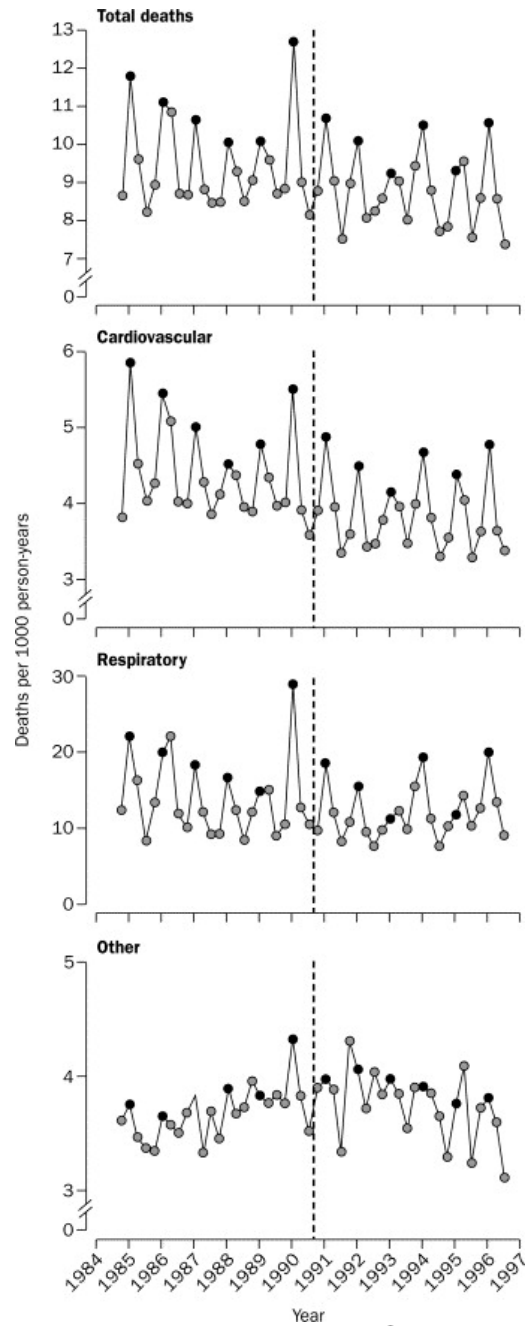


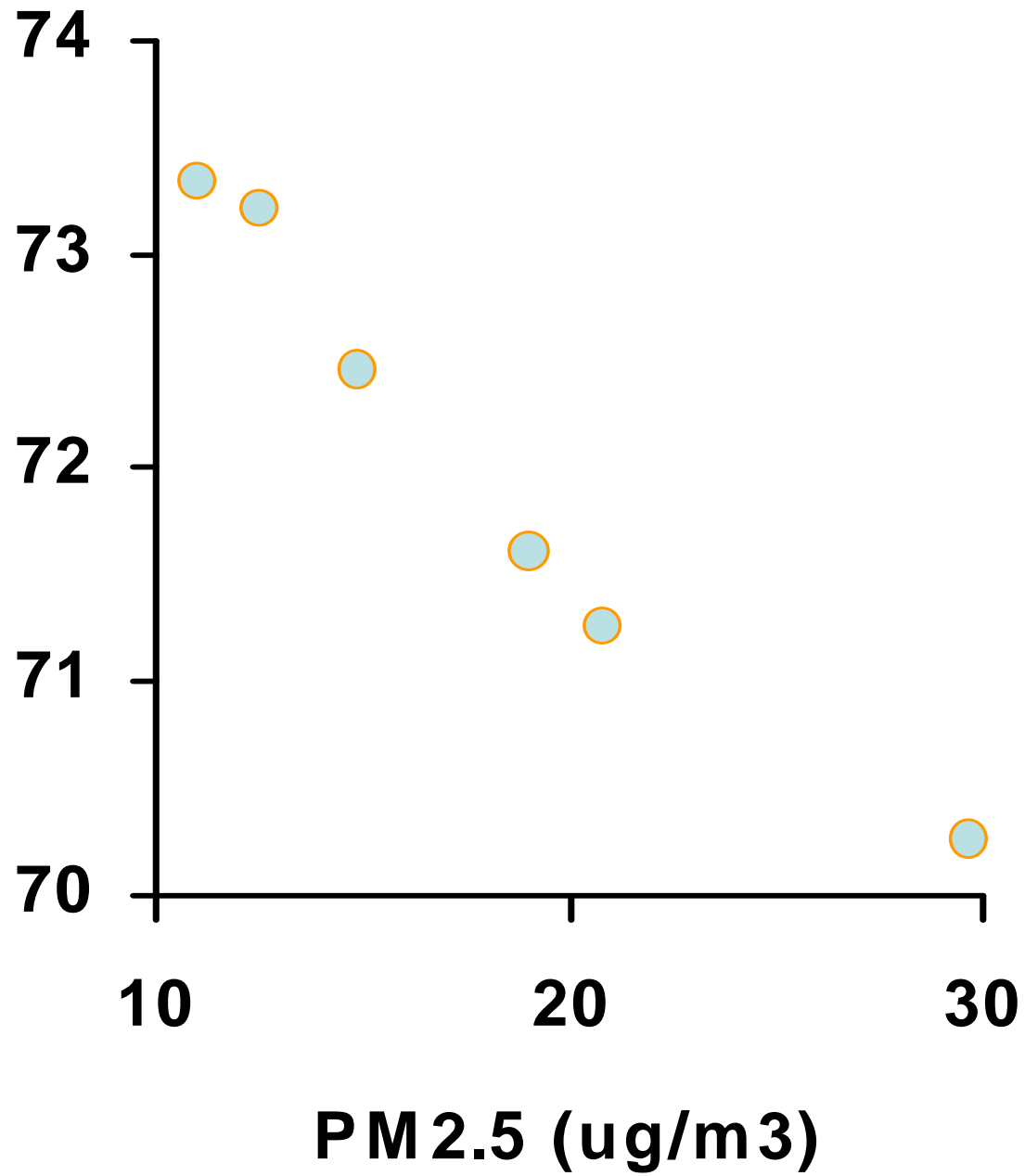




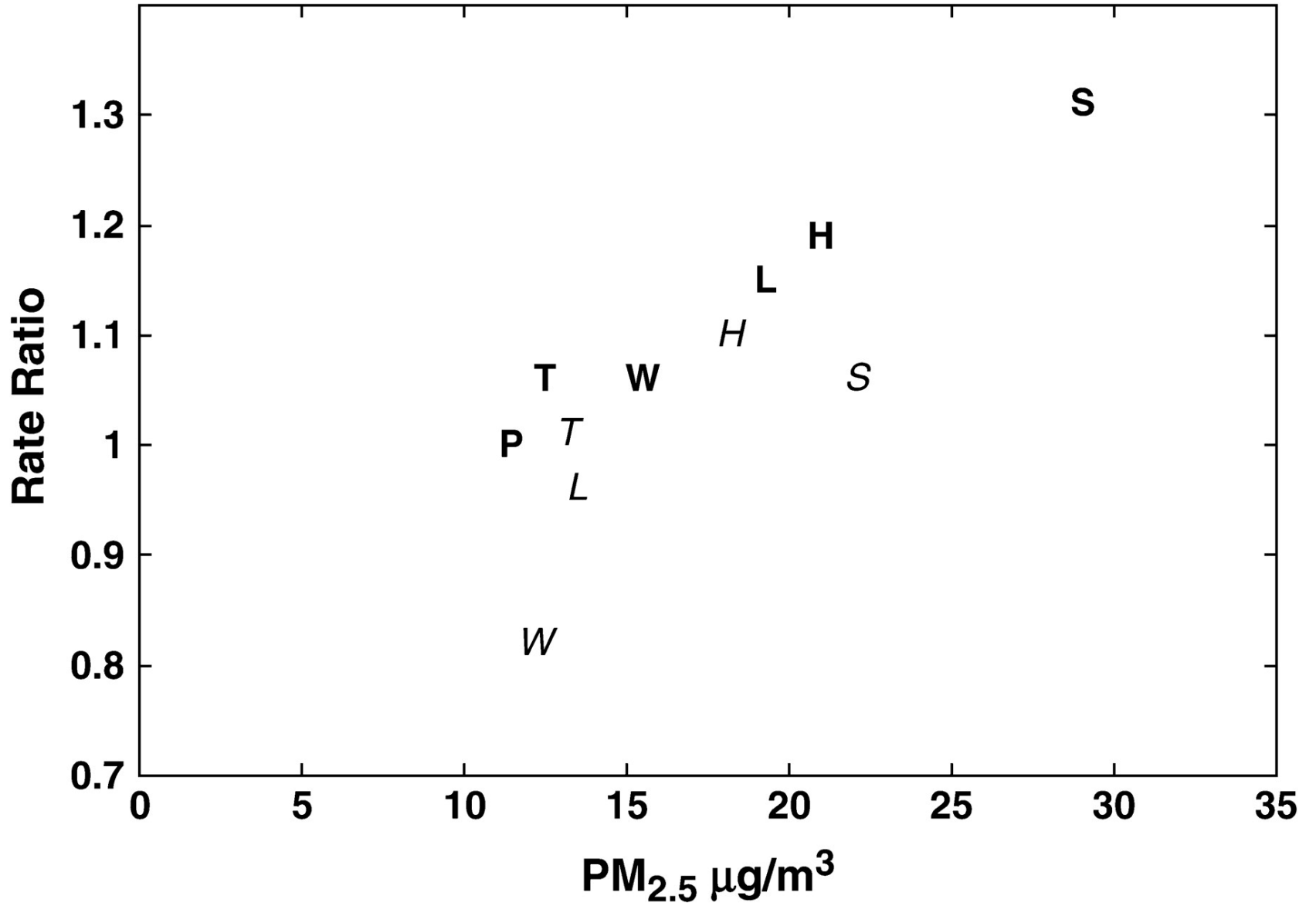


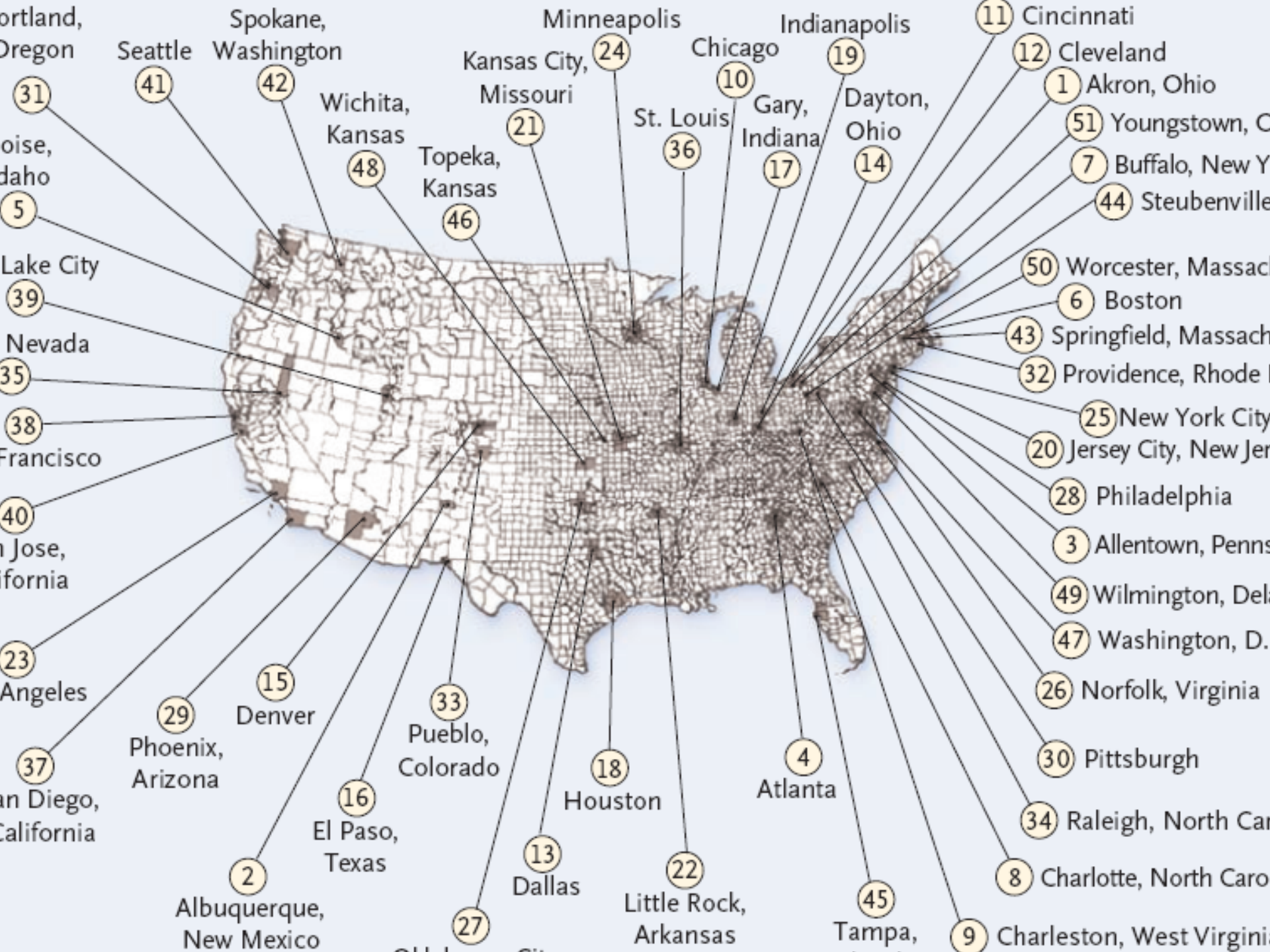


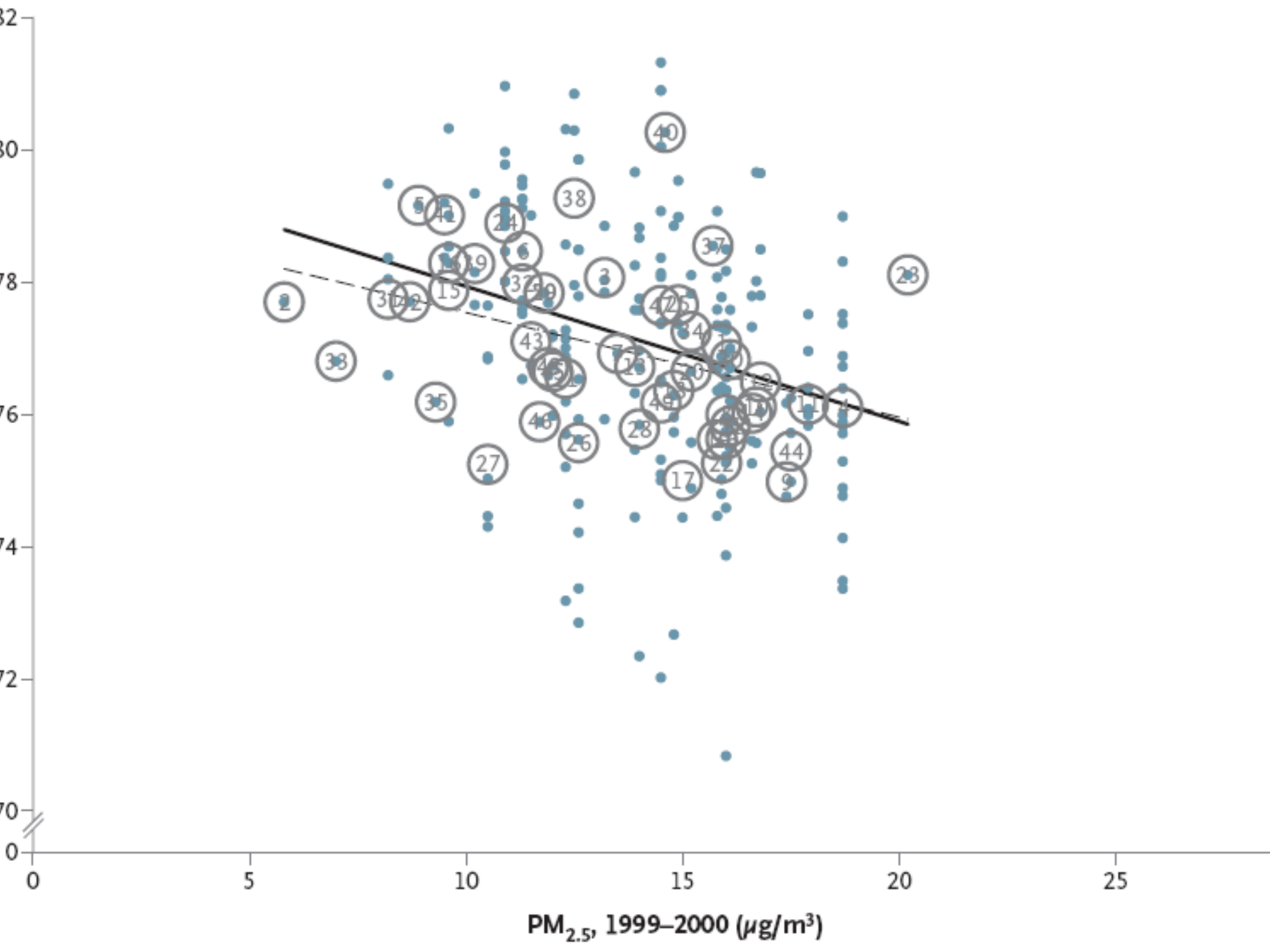




Tipo de morte	Aumento porcentual de mortes por 10µg/m ³ de PM2.5
Cardiovascular	12 (9 a 17)
DPOC	15 (8 a 24)
Câncer do Pulmão (55 a 64 anos)	19 (9 a 35)
Cardiorespiratória (Pope e cols, 2000)	9 (3 a 16)
Câncer do Pulmão (Pope e cols, 2000)	14 (4 a 23)









Environmental Health, Energy, and Transportation: Bringing Health to the Fuel Mixture
Sponsored by
The Institute of Medicine's Roundtable on Environmental Health Sciences,
Research, and Medicine

Nov 29-30, 2007
National Academy of Sciences
2100 Constitution Ave, NW
Washington, D.C

Goal:

This workshop will address the potential environmental and public health consequences of transport fuel production and use. It will focus on the unintended consequences of previous changes to fuel mixtures, and examine possibilities for new fuel sources and mixtures. The workshop will explore the costs and benefits of potential fuel mixtures for the United States, with an emphasis on health, sustainability, environmental and public health consequences.

www.iom.edu/ehsrt